



Weekly Web Round Up



FRIDAY, 17TH DECEMBER 2021

Kalagro Fuel Price

DIESEL - \$1.42375 including GST

UNLEADED - \$1.47276 including GST

Fuel Delivery Days – Monday, Wednesday & Friday

Contents List

1. REMINDER – KCGO Member Discounted Health Insurance
2. Burdekin Irrigation Project Factsheet & FAQs
3. SRAE-Newsletter
4. Wilmar Burdekin Grower Update – Inkerman Mill
5. Wilmar Weekly Equity Summary – Crush Week 27
6. Wilmar Weekly Variety Summary – Crush Week 27
7. Wilmar Grower Crushing Update – 13th December 2021
8. OFF 10 Things to know – 13th December 2021
9. QSL Information Brief – 13th December 2021
10. Wilmar Production Report – Crush Week 27
11. Wilmar Budget vs Actual – Crush Week 27
12. Farmers & Friends Men's Mental Health Evening Invite
13. LBW Director Nominations & Annual Shed Meetings



KCGO OFFICE CHRISTMAS CLOSURE

CLOSING 23RD DEC – 4.30PM

RE-OPEN 10TH JAN – 8.30AM



Kalagro Customers

Chevron Australia Downstream Pty Ltd has changed to Portsmouth Petroleum from 1st Dec 2021

Please Note: Services / Payments / Fuel & Deliveries will remain the same for Kalagro Customers.

The KCGO office is closed between 24/12/21 – 9/1/22. All fuel can be pre-ordered if required in that period.

Please place these orders before the close of business 23rd Dec 2021.

DATES OF FUEL DELIVERIES AVAILABLE DURING OFFICE CLOSURE PERIOD

WEDNESDAY, 29TH DECEMBER 2021

FRIDAY, 31ST DECEMBER 2021

MONDAY, 3RD JANUARY 2022

WEDNESDAY, 5TH JANUARY 2022

FRIDAY, 7TH JANUARY 2022

MONDAY, 10TH JANUARY 2022

1. REMINDER** - KCGO MEMBER DISCOUNTED HEALTH INSURANCE OFFER



Corporate Health Insurance

Working together with Kalamia Cane Growers, we are excited to offer you a healthy corporate discount on your health insurance under the Kalamia Cane Growers Corporate Health Plan. Experience the Queensland Country difference with:

- ✓ **Healthy savings**
A 6% discount* on your annual policy premium.
- ✓ **A dedicated Corporate Partnership Manager**
Kim Anderson, your dedicated Corporate Partnership Manager will be happy to help you with any questions you may have.
- ✓ **Easy to understand products**
Our products are easy to understand and provide our Members with great value for money and peace of mind.
- ✓ **Excellent service**
We're here to help. Our commitment to helping our Members is second to none with fast and friendly service both face to face or over the phone.
- ✓ **National Coverage**
We provide coverage anywhere in Australia, giving you peace of mind wherever you work, live or play.
- ✓ **95% Member satisfaction rating^**
- ✓ **Generous benefits**
Our benefits help promote a healthy lifestyle and based on direct Member feedback, are regularly reviewed to ensure they remain competitive.
- ✓ **Easy claiming**
Claim easily anywhere, anytime through our Mobile App by simply uploading a photo of your receipt or via our Online Member Services portal.

If you have any questions or for more information contact your dedicated Corporate Partnership Manager, Kim today!



**Queensland
Country
Health Fund**

0417 622 856 • kanderson@queenslandcountry.health

* The corporate discount is provided under the Kalamia Cane Growers Corporate Health Plan and is applied to the gross premiums at the chosen level of cover.
^Source: January 2021 Member Satisfaction Survey, 63% were very satisfied and 32% were somewhat satisfied from 1,494 respondents.

Already a Member with Queensland Country?

We'll give you a
\$100*
Gift Card!

If they take out an eligible singles policy

We'll double it for a couple or family!



Great news if you're already a Member you'll now be eligible to receive a **corporate discount*** on your premium! To receive this discount simply complete the Apply Discount Form on your health insurance portal. Once you have submitted the request form, we will confirm via email or post that the discount has been applied.

ALSO, don't forget to **refer a friend, family member, colleague or work mate** to Queensland Country and if they take out an eligible singles policy during the promotional period you'll receive a \$100 Visa Gift Card*. And we'll double it for couples or family policies!

Make sure you tell your friend when joining to provide us with your name and contact details, so we can send you your gift card.

There is no gift card limit, so tell as many friends as you like!!



**Queensland
Country**
Health Fund

0417 622 856 • kanderson@queenslandcountry.health

* The corporate discount is provided under the Kalamia Cane Growers Corporate Health Plan and is applied to the gross premiums at the chosen level of cover. * Offer valid until 31 December 2021. The referring person must be an existing Queensland Country Health Fund policy holder. Available to new Silver and Bronze Hospital policies only. Available with corporate discount offers, but not in conjunction with any other offer. Terms and conditions apply and are available at queenslandcountry.health Queensland Country Health Fund Ltd ABN 18 085 048 237.

2. Burdekin Irrigation Project – Factsheets – Posted – 10/12/21



Farmer rebate budget: Eligible tools and services

A baseline assessment is conducted by the delivery team (DT) with the participating Burdekin Irrigation Project (BIP) farmer to understand:

- how much water is applied per irrigation
- when it is applied
- the cost of application
- opportunities for improvement.

Participants may be eligible for a farmer rebate on approved activities to improve irrigation management practices. Opportunities to improve the timing of irrigation events and the amount of irrigation applied must be addressed before being eligible to receive rebates for:

- tools
- tariff review (TR)
- pumping system assessment (PSA).

The tools budget is used to purchase tools to achieve Level 1, 2 or 3 outcomes.

Maximum allowable rebate (GST exclusive)					
	Tools (\$/ha)	Tariff review (\$/ha)	Pumping system assessment (\$/ha)	Combined (\$/ha) ¹	Maximum rebate (Up to 200ha ²)
Level 1	\$15	not eligible	not eligible	\$15	\$3,000
Level 2	\$70	\$10	\$60	\$140	\$28,000
Level 3	\$80	\$10	\$60	\$150	\$30,000

¹ The combined Rebate (\$/ha) provides flexibility, where the TR and/or PSA budget can be reallocated into the tools budget. (Unspent maximum allowable rebate for the tools budget cannot be reallocated into the TR or PSA budgets.)

² The maximum rebate is calculated using the actual project area in hectares multiplied by the rebate amount for the Level that the grower has nominated to participate in the project.

If a project area is greater than 200ha, the total area is eligible for irrigation management improvement. The eligible rebate will be calculated using a maximum of 200ha.

Criteria for all levels:

- Cash co-contributions from farmers is a requirement.
- In addition to the eligible rebate amount per hectare, the rebate support is capped at a maximum of 50% of the total grower cash expenditure.



Great Barrier
Reef Foundation

The Burdekin Irrigation Project is funded by the partnership between the Australian Government's Reef Trust and the Great Barrier Reef Foundation with collaboration between Sugar Research Australia, Farmadist, AgriTech Solutions, Burdekin Productivity Services, Burdekin Bowen Integrated Floodplain Management Advisory Committee, James Cook University, the Queensland Department of Agriculture and Fisheries and NQ Dry Tropics.



EXAMPLES

Tools – Soil moisture (SM) probes

SM probes that are eligible for rebates	Typical costs (approx.)	Maximum rebate (\$15.00 per eligible ha in BIP)	BIP approved supplier	Comment
MEA G-dot	MEA G-dot and granular matrix sensor from \$330	\$165/probe or 50% of the invoiced price (whichever is lower)	Farmacist BPS	These are standard probes that are easily purchased from multiple suppliers. Rebate does not cover: installation, telemetry, logging devices, web hosting
Tensiometer	600 mm Jetfill from \$270	\$135/probe or 50% of the invoiced price (whichever is lower)	AgriTech Solutions	
Capacitance probes – measuring soil moisture & temperature	400 mm probe from \$820 800 mm probe from \$1,000	\$410/400 mm probe or 50% of the invoiced price (whichever is lower) \$500/800 mm probe or 50% of the invoiced price (whichever is lower)	AgriTech Solutions	

Tools – Pump timers

Timers that are eligible for rebates	Typical costs (approx.)	Maximum rebate (\$70 per eligible ha in BIP)	Supplier	Comment
Manual (analogue) and electronic timers	Hardware for a timer and control switch from \$360	\$180/timer or 50% of the invoiced price (whichever is lower)	Local electricians and electrical suppliers	These are standard devices that are easily purchased from electricians and multiple suppliers. Pump timers will be limited to a maximum number of 1 per 10 ha. Rebate does not cover installation
Note: Analogue timers are usable on any site. Digital timers require a neutral connection. It is advisable to have a separate control switch which enables both manual and automatic operation.				

Tools - Automation

Maximum combined rebate is up to \$140 per eligible ha in BIP for level 2; and \$150 per eligible ha in BIP for level 3.			
Automation systems eligible for rebates	Supplier	Typical costs	Comment
WiSA	AgriTech Solutions (Burdekin)	Base station, UPS and computer \$11,900 Pump controller and pressure transducer \$3,700 T-piece (151Mhz radio, solar panel, 2 x actuators) \$4,200 Advance sensor (portable includes radio, solar panel, 1 x sensor) \$3,300 Annual subscription: nil	PC-based system with remote access via the internet. Actuator brackets supplied by farmer. Typical installation costs are included.



Level 1, 2 and 3 tool examples and justification

All items require justification and approval from the BIP delivery team.

Items include but are not limited to the following:

Eligible items	Justification	Ineligible items	Justification
Soil moisture monitoring probes: G-Dot, tensiometer, capacitance probes etc	Assist with timing of irrigation events BIP will agree on BMP protocols	Fluming	General maintenance cost
Scheduling tools – IrrigWeb, Opticane, ETO & Kc	Used to determine crop water use and soil water deficit	Pipelines	General setup or maintenance cost
Pump timers or controllers	Ability to turn pumps off at a prescribed time	Infrastructure – recycle pit	Out of scope
End-of-row sensors	Able to measure when irrigation events are complete	Land levelling	General farm cost
VFD	Regulating pump flow to improve applied volume and avoid practices like reduce "dumping" of water into wet fields.	Solar systems	Out of scope
Automation equipment: WISA	Able to control and monitor pump and/or irrigation valves	Automatic weather stations	Out of scope
Rain gauges – manual or automatic	Additional rain fall data improves scheduling	Meter box upgrades	General maintenance cost
Flow meters – permanent installations	To measure the flow of a pump		

Burdekin Irrigation Project FAQs



Making irrigation work for you.

What's the Burdekin Irrigation Project (BIP) all about?

The BIP team will support Lower Burdekin sugarcane farmers to transition to more efficient irrigation systems and practices in order to reduce on-farm irrigation expenses, run-off and deep drainage losses and improved productivity and profitability.

Who is running the BIP?

The BIP is a collaborative initiative of Sugar Research Australia (SRA), Farmacist, Burdekin Productivity Services, AgriTech, BBIFMAC and JCU. Together this group is known as the consortium.

How long will the BIP run?

The project will run for three and a half years, from February 2021 to June 2024.

Where will the BIP be rolled out?

The project will run across the Lower Burdekin.

What are the aims of the BIP?

The BIP aims to help growers save energy, water and money while improving productivity and profitability from irrigated sugarcane.

How will sugarcane growers in the Burdekin benefit from the project?

BIP farmers will:

- receive one-on-one support to strategically improve irrigation systems
- identify opportunities to save on energy and irrigation costs

- investigate potential water use efficiencies
- improve productivity and profitability
- develop a plan for irrigation improvement which may also support a case for third party financial incentives, if and when they are offered to the lower Burdekin region.

BIP co-benefits

Co-benefits of the BIP include:

- reduced water loss from the farm as run-off or deep drainage
- improved environmental outcomes.

How will the project work?

The BIP team is made up of four extension officers (representing SRA, BPS, Farmacist and AgriTech Solutions) who will work one-on-one with farmers to:

- measure existing water and energy use and identify inefficiencies or potential losses
- help farmers identify new irrigation techniques, tools and technologies to improve on-farm water and energy efficiencies
- develop a tailored irrigation improvement plan.

The project will also feature demonstration farms where growers can see smart practice in action and hold field days to enable networking, information sharing and updates from the project team.

Where can I find out more about the BIP?

Contact **Terry Granshaw** on **0457 650 181** or email tgranshaw@sugarresearch.com.au

Armin Wessel on **0436 937 555** or email awessel@sugarresearch.com.au



The Burdekin Irrigation Project is funded by the partnership between the Australian Government's Reef Trust and the Great Barrier Reef Foundation with collaboration between Sugar Research Australia, Farmacist, AgriTech Solutions, Burdekin Productivity Services, Burdekin Bowen Integrated Floodplain Management Advisory Committee, James Cook University, the Queensland Department of Agriculture and Fisheries and NQ Dry Tropics.



In this eNewsletter, we bring you the results of the sugarcane farm business survey, and share some new data from the Australian Bureau of Statistics. Read up on the new Drought Assistance Program for Queensland that was recently launched, how electromagnetic mapping can help you to improve your soil health, and find out about a new organic waste grant program. And if you have greyback beetles, we would like to hear from you.

Farmers report improved financial performance

Sugarcane farming businesses are performing better financially than they were seven years ago, according to new insights from the ABARES sugarcane farm business survey.

Average farm cash income for 2021 was around \$190,800 per farm, 91% higher than 2014.

The survey, commissioned by Sugar Research Australia and the Queensland Department of Agriculture and Fisheries, examined the financial performance and management practices of Australia's sugarcane farming businesses.

Further information on the findings, including the full report and an interactive digital dashboard, is available on the SRA website [information and insights page](#).

SIX EASY STEPS[®]

Many growers already compliant with nutrient management requirements

[Reef protection regulations](#) are continuing to roll out in more regions with new requirements for **sugarcane nutrient management** in the **Wet Tropics, Burdekin and Mackay Whitsunday regions** from 1 December 2021.

Growers who are Smartcane Best Management Practice (BMP) accredited are deemed to be compliant with the regulated standards and will be the lowest priority for compliance inspections. They will also not need to update, review or have their nutrient management approach verified.

Growers who are not BMP accredited will need to develop a [farm nitrogen and phosphorus budget](#) to calculate the amount of fertiliser they can apply in the 2022 season.

The requirements still use soil testing and the regulated method (including parts of the SIX EASY STEPS®) to work out nitrogen and phosphorus rates for each block. However, growers can now refine these rates across their farm as long as they do not exceed the whole-of-farm amount.

For more information, including a [video](#) outlining the process to develop a budget, registering for an online information session and ordering an information pack:

Visit: www.qld.gov.au/ReefRegulations

Phone: 13 QGOV (13 74 68)

Email: officeofthegbr@des.qld.gov.au

New Queensland drought assistance

Eligible primary producers across all agricultural industries can apply for the new drought preparedness assistance, without needing a drought declaration.

More information, including an explanation and templates for developing a Farm Business Resilience Plan, is available on the Drought Assistance Program website.

The Farm Business Resilience Program and the Farm Management Grants are jointly funded through the Australian Government's Future Drought Fund and the Queensland Government.

[READ MORE](#)

Electromagnetic mapping to improve soil health

In the last enewsletter there was information on electrical conductivity (EC) mapping. This time, we are bringing you information on electromagnetic mapping (EM).

Electromagnetic mapping can help you identify opportunities to improve soil health.

An information sheet about EM has recently been developed and is available on the SRA website as part of the Soil Health Toolkit. (The information sheet was produced by the Central soil health project but the information is relevant across all regions.)

Contact your local trusted advisor for more information or to discuss opportunities to undertake EM on your farm.

[READ MORE](#)



Australian Bureau of Statistics (ABS) trials new methods to provide sugarcane statistics

The ABS has released new statistics on sugarcane production, area of harvest and business counts, using a combination of the Levy Payer Register and satellite mapping data.

The new methods produce accurate and timely statistics on a regional level that is usually only available from an agricultural census.

More information, examples of the data available, and downloads of the data are available on the ABS website.

[READ MORE](#)



SRA contributes to innovation platform

From its launch early this year, SRA has been a partner in growAG, a collaboration between the Department of Agriculture, Water and the Environment and the 15 rural regional development corporations (RDCs).

The purpose of growAG is to act as a platform to showcase Australia's world leading agricultural research, unique technologies and commercialisation opportunities.

Visit the [growAG website](#) to find out more.

growAG recently conducted an interview with SRA's CEO, Ros Baker, and the article has been published. Read it [here](#).

SRA will continue to engage with growAG to build a presence on the platform and ensure that SRA is able to leverage the opportunities it brings to support the sugarcane industry.

La Nina declared – update from the Bureau of Meteorology

The Bureau of Meteorology (BOM) recently declared that La Nina is underway. For more information, the BOM website has a range of resources.

[READ MORE](#)

Soybean preseason workshops in Mackay and the Burdekin

Grains Research & Development Corporation in conjunction with the Queensland Department of Agriculture and Fisheries is holding soybean preseason workshops on Monday 13 December (Mackay) and Tuesday 14 December (Burdekin).

More information and RSVP details are available.

[READ MORE](#)



Grant program for diverting organic waste from landfill

The Queensland Government is partnering with the Australian Government to deliver the Queensland Food Waste for Healthy Soils Program.

The program is open to private industry for projects that divert organic material from landfill and produce outputs that can be safely used on soils.

Round 2 applications close 25 February.

[READ MORE](#)



We need your help collecting greyback beetles

SRA entomologists need to rear live greyback beetles to obtain healthy canegrub larvae for bioassays to assist with our ongoing work to find alternatives to imidacloprid.

We are looking for beetles on feeding trees. Feeding trees should be easy to spot. They're usually mango or fig trees with stripped leaves due to very hungry beetles coming to feed in large numbers!

Contact SRA's entomologist or your local district manager for details if you have noticed beetles feeding on your property:

Central, Dylan Wedel: 0490 029 387

Burdekin, Terry Granshaw: 0457 650 181

Herbert, Phil Patane: 0431 818 482

Far North, Gavin Rodman: 0476 807 355

Entomologist, Pauline Lenancker: 0436 914 152

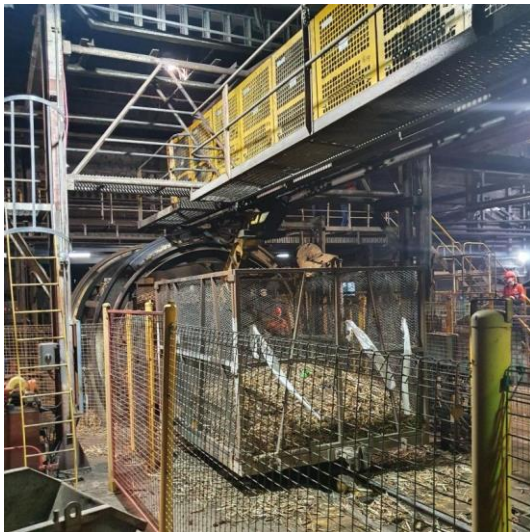
4. Wilmar Burdekin Grower Update – Inkerman Mill – Posted – 10/12/21

[View this email in your browser](#)



Friday, 10 December 2021

Inkerman Mill crushed out for the 2021 season last night.



The last bin goes through the tippler for Inkerman Mill's 2021 season.



Last bin tipped for 2021.

The last cane was harvested yesterday morning and the last bin was tipped at **8.36pm**.

We processed about **1.65 million tonnes of cane** this year, with a provisional season CCS of **14.3 units**.

It's been a challenging season, and I'd like to acknowledge all Inkerman growers and

harvesting contractors for working with us to get the crop off.

I'd also like to thank Inkerman Mill's Operations Team and the Cane Supply and Transport team for their hard work and dedication.

On behalf of the team at Wilmar Sugar, thank you for your cooperation during the 2021 season.

Best regards

PAUL TURNBULL

Burdekin Regional Operations Manager

Copyright © 2021 Wilmar Sugar Australia, All rights reserved.

You are receiving this because you are a valued customer of Wilmar Sugar Australia.

Our mailing address is:

Wilmar Sugar Australia
Level 1, 5-21 Denham Street
Townsville, QLD 4810
Australia

[Add us to your address book](#)

[unsubscribe from this list](#) [update subscription preferences](#)

INKERMAN MILL

Harvest Group	Orig Est	Adjusted Est	Tonnes Week	Tonnes STD	Tonnes Remains	% Delivered	%Diff	%ActOrig	%ActLa test	Bin Allot Orig	Bin Allot Current	WeekBinW t	RollBinW t	Tonnes Allotment Current
Inkerman	1,679,436	1,692,959	38,967	1,692,959	0	100.00								
402-CANNAVAN	78,271	79,549	2,185	79549.28	0	100.00	0.00	104.71	102.39	126	0	6.43	6.35	0
403-MILBURN 2	13,422	13,769	0	13768.9	0	100.00	0.00	105.71	101.22	54	0	6.23	6.23	0
409-CONTZONIS	85,729	85,648	937	85647.91	0	100.00	0.00	103.28	101.45	138	0	6.29	6.26	0
410-BONANNO	62,980	64,562	11	64561.83	0	100.00	0.00	105.18	103.71	101	0	5.60	6.49	0
412-MARANO G	61,272	68,504	2,733	68504.32	0	100.00	0.00	113.34	105.65	99	0	5.54	5.76	0
413-AHC	59,613	61,072	2,749	61071.57	0	100.00	0.00	107.81	105.95	96	0	5.36	5.76	0
414-LOIZOU	58,538	59,566	1,875	59565.73	0	100.00	0.00	104.09	103.98	119	0	6.84	6.73	0
415-MILBURN 1	32,806	31,584	439	31584.39	0	100.00	0.00	98.60	98.54	88	0	5.94	5.75	0
419-ACHURRA	23,733	25,209	1,002	25208.92	0	100.00	0.00	107.99	108.60	64	0	6.34	5.67	0
420-BOCCO HARVESTIN	58,263	61,820	2,672	61820.37	0	100.00	0.00	108.62	101.35	94	0	6.07	6.03	0
421-DOWNRIVER HARVE	82,445	80,499	2,579	80499.41	0	100.00	0.00	99.68	99.45	133	0	6.42	6.33	0
424-CASSIDY CREEK H	98,654	95,241	1,456	95241.21	0	100.00	0.00	99.94	97.16	159	0	6.39	6.35	0
426-BETTERIDGE	73,680	76,672	2,149	76671.68	0	100.00	0.00	104.96	101.90	119	0	5.54	5.50	0
427-MANN	76,301	85,384	2,446	85384.33	0	100.00	0.00	113.28	99.04	123	0	5.73	5.71	0
428-DALE	79,565	78,336	202	78335.58	0	100.00	0.00	101.92	99.40	128	0	6.75	6.10	0
429-SIRO HARVESTING	56,829	56,292	1,152	56291.99	0	100.00	0.00	102.15	103.79	115	0	6.33	6.32	0
430-M & K HARVESTIN	58,553	54,389	1,912	54388.84	0	100.00	0.00	95.93	95.76	94	0	5.73	5.72	0
431-S BETTERIDGE2	16,328	15,545	0	15545.39	0	100.00	0.00	98.96	97.56	134	0	6.27	6.27	0
432-FOWLER	44,374	44,279	370	44278.8	0	100.00	0.00	102.36	101.17	90	0	5.78	5.32	0
433-SGROI	64,232	59,854	0	59854.39	0	100.00	0.00	96.34	98.62	130	0	5.23	5.27	0
434-WRHC 1	31,135	30,489	0	30489.31	0	100.00	0.00	99.32	98.30	125	0	4.64	4.64	0
435-ROSSATO	38,141	38,090	1,071	38090.08	0	100.00	0.00	104.43	100.99	77	0	5.89	5.77	0
436-POPULIN 2	35,600	36,867	1,316	36866.9	0	100.00	0.00	106.21	102.02	96	0	6.09	6.04	0
437-GA & RL HARVEST	78,630	84,391	1,861	84390.83	0	100.00	0.00	109.77	98.47	127	0	6.55	5.90	0
438-WRHC 2	27,845	27,281	0	27281.08	0	100.00	0.00	100.02	99.79	112	0	5.77	5.77	0
439-POPULIN 1	20,895	21,810	0	21810.18	0	100.00	0.00	106.69	103.63	84	0	6.60	6.60	0
441														

INKERMAN MILL

Mill : INKERMAN		VARIETY SUMMARY										Prepared: 01:42 PM Sat 11-Dec-2021									
db453: DI 05																					
2021 season: Std wk 41		Week 27 ending 11-Dec-21										Report Name: FULL REPORT									
												Page: 7									
Variety Code	Name	<-- One Year Plant	--> tonnes Ratoon	<-- Standover Plant	--> tonnes Ratoon	<-- ALL Total	--> % CANE Supply	Avg Bin Wt	<----- 1-Yr	CCS S/O	<----- Total	<--- Purity 1-Yr	S/O	<--- Total	Cane EM	%	Mud Index				
178	KQ228	21213	21213			21213	49.2	6.03	11.43	11.43	81.9			81.9			5.1				
200	Q240	11854	11854			11854	27.4	6.07	11.75	11.75	83.3			83.3			4.4				
163	Q208	6205	6205			6205	14.3	5.99	10.80	10.80	79.8			79.8			3.9				
143	Q183	2892	2892			2892	6.7	6.79	12.45	12.45	83.2			83.2			3.6				
190	Q232	379	379			379	0.8	6.67	10.00	10.00	78.3			78.3			2.6				
211	SRA8	371	371			371	0.9	6.28	11.39	11.39	80.1			80.1			2.6				
205	Q252	101	101			101	0.2	5.11	11.05	11.05	75.8			75.8			2.6				
204	Q253	97	97			97	0.2	5.41	10.19	10.19	80.0			80.0			2.0				
TOTAL		43116	43116			43116	100.0	6.01	11.49	11.49	82.0			82.0			4.5				

7. Wilmar Sugar Crushing Update – Posted – 10/12/21

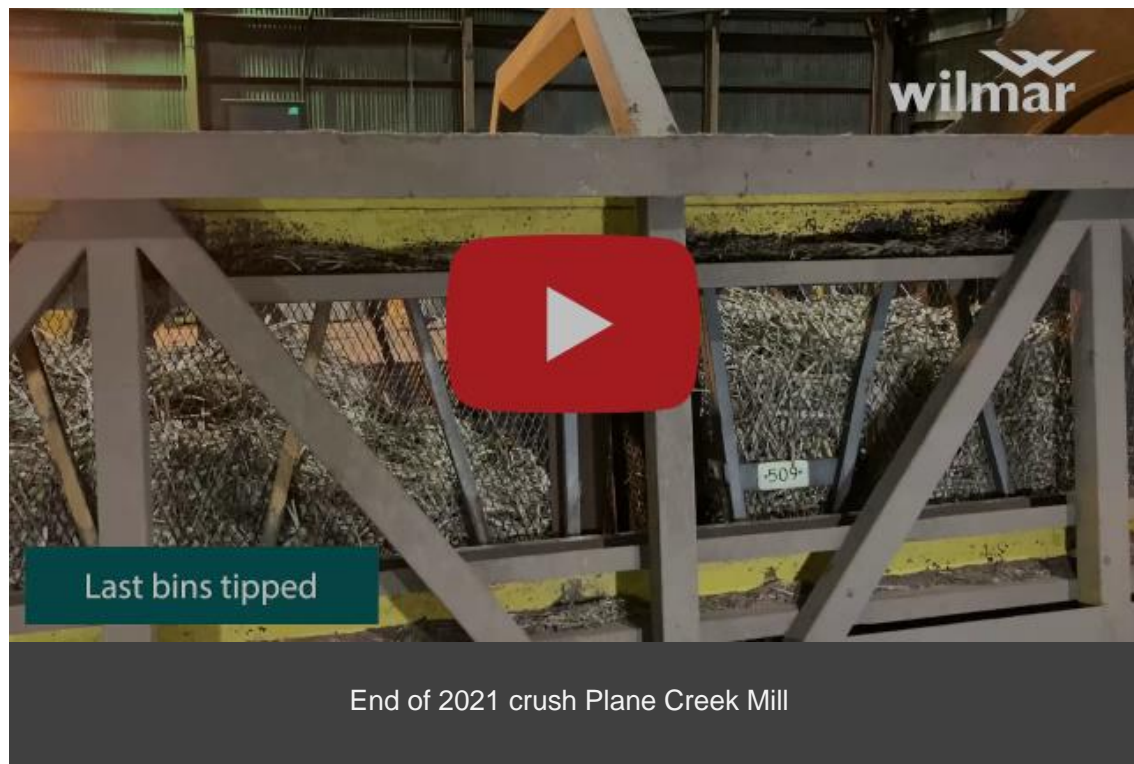


Monday, 13 December 2021

The last of Wilmar's mills crushed out last night, bringing the 2021 season to a close. Our eight factories processed **14.6 million tonnes** of cane to make about **2 million tonnes** of raw sugar.

The last cane was crushed at Plane Creek Mill at 10.33pm yesterday (Sunday, 12 December).

We created a 30-second video to capture the end of the season.



Here is a regional snapshot of the 2021 crush.

Region	Cane crushed	Season CCS
Herbert	3.797 million tonnes	12.73
Burdekin	7.882 million tonnes	14.40
Proserpine	1.556 million tonnes	14.43
Plane Creek	1.367 million tonnes	14.34

With the crush now complete, our crews are preparing for our maintenance season works program.

Wilmar is maintaining a high level of investment in its mills and cane supply network, with more than \$187 million being spent on maintenance and capital replacement projects in 2022.

I'd like to thank all growers and harvesting contractors for your cooperation this season, and wish you a safe and happy Christmas.

We look forward to working with you again in 2022.

Best regards

PAUL GIORDANI

General Manager - Cane Supply and Grower Relations

HERE'S 10 THINGS TO KNOW.

FROM  QUEENSLAND FARMERS' FEDERATION

1.

Soils support plant growth and contribute to planted vegetation including food, fibre, foliage, fodder, fuel and medicinal products in relation to the prevailing climate, landscape and soil type and according to societal needs. Read QFF's [Queensland Country Life](#) column [HERE](#).

2.

QFF has partnered with [Ergon Energy](#) and [Energex](#) to offer farmers belonging to any of QFF's 20 industry members a 50 per cent co-contribution a maximum of \$500 to match the funds of installing up to 10 rotamarkers on their properties. For more information about the rebate and eligibility criteria, click [HERE](#).

3.

Tell us about your electricity tariffs and we'll give you a \$40 gift voucher! QLD and NSW farmers are encouraged to participate in a QFF, the [University of Queensland](#) and [Energy Consumers Australia](#)'s research project helping you choose better energy options. Get involved [HERE](#).

4.

Hard work and a willingness to adopt new technology and practices are behind the positive results in an [ABARES survey of sugarcane farms](#) according to peak grower group [CANEGROWERS](#). Read more from QFF's industry member [HERE](#).

5.

The Queensland Government has made a commitment to open to travellers from interstate hotspots by 17 December, or earlier should we reach 80 per cent full vaccination. This means from next Monday, we can no longer expect to live and operate our businesses in Queensland without any COVID-19. Read more from [Growcom](#) [HERE](#).

6.

Despite recent flood and rain damage in the eastern states, [ABARES'](#) Agricultural Commodities: December Quarter is forecasting a history-making agricultural gross production value of \$78 billion – \$5.4 billion more than predicted just a few months ago. Read the report [HERE](#).

7.

The [ACCC's](#) [Agricultural machinery market study](#) examined markets for the sale of agricultural machinery, as well as those for after-sales services, such as repairs. They have developed guidance materials to assist agricultural machinery purchases. Find the materials [HERE](#).

8.

Residents of Inglewood, Coolmunda and parts of Texas who have been impacted by flooding over recent days may be eligible for financial assistance, including Emergency Hardship Assistance grants of up to \$180 per

person and \$900 for a family of five. More information and apply [HERE](#).

9.

On 17 December 2021, Queensland is set to ease restrictions for entry to Queensland. The Queensland Government has published the Public Health and Social Measures linked to vaccination status Direction, read the direction and understand your obligations. More [HERE](#).

10.

If you keep one or more head of cattle, sheep, goats, pigs, bison, buffalo, deer, camelids or equines, more than 100 poultry or pigeons, or a beehive — you must be registered with [Biosecurity Queensland](#). Check if you're registered and confirm your details [HERE](#).



9. QSL Information Brief – Posted – 13/12/21



Please find below a short news & information brief from QSL that you may wish to use in your communications to your members.

- **Advances increase:** The Standard QSL Advances rate will increase to 77.5% from 15 December 2021. This represents a 5% increase on the current rate. From 15 December, those growers who have nominated to receive Accelerated Advances in the 2021 Season will also move to an Advances rate of 90% for their filled grower-managed pricing and/or Guaranteed Floor tonnage. [For further details regarding the 2021-Season Advances rate, please click here.](#)
- **Non-delivery options:** QSL offers its growers a number of options to help address over-commitment, including washing out positions or rolling pricing forward into the next season. QSL growers who have failed to deliver their committed sugar should contact their local QSL team as soon as possible to help find the lowest-cost option available within the current market for their particular pricing position. [Click here to read more about QSL's non-delivery options](#)
- **Updated pool prices:** QSL's 2021 Season QSL-Managed Pool Prices have been updated with the forecast current as at 26 November 2021. To see QSL's latest indicative pool prices and shared pool values, please [click here](#).
- **On a roll in the QSL App:** Growers using QSL's Individual Futures Contract and Self-Managed Harvest Contract pricing options can now roll any eligible tonnage on demand by using the QSL App. Rolling extends the time available to achieve pricing in these products to as late as mid-April in the year after the harvest, providing unmatched flexibility for up to 98% of your QSL tonnage. You can elect to roll unpriced tonnage in the prompt contract on any working day prior to the Pricing Completion Date for that contract. To do so, just log on to your QSL Direct account via the QSL App, open the relevant order, and then hit the 'ROLL TONNES' button. There is no fee to roll tonnage, however you will incur an adjustment representing the cost associated with re-establishing your positions in the new contract. You can find an estimate of this roll adjustment on the QSL website and our Daily Price email, or by contacting your local QSL team.

If members have any questions in regards to the above, please don't hesitate to get in contact with:

- Russell Campbell - Grower Relationship Manager – 0408 248 385
- Kristen Paterson - Grower Relationship Officer– 0438 470 235
- Rebecca Love – Grower Relationship Officer – 0429 054 330 (Mon-Wed)

Rebecca Love

Grower Relationship Officer - Burdekin

Mobile 0429 054 330

rebecca.love@qsl.com.au

www.qsl.com.au

10. Wilmar Production Report – Posted – 13/12/21

Weekly production figures

Burdekin region mills Week 27, ending 11th December 2021

Cane crushed	This week	Season to date
Invicta	0	3,050,914
Pioneer	0	1,625,328
Kalamia	0	1,552,308
Inkerman	43,117	1,654,431
Burdekin		7,882,981

CCS		
Invicta	0	14.48
Pioneer	0	14.60
Kalamia	0	14.12
Inkerman	11.49	14.23
Burdekin	12.13	14.38

Weekly variety performance for region

Variety	%	CCS	Variety	%	CCS
KQ228	48	11.48			
Q240	30	11.79			
Q208	14	10.76			

Comments:

Just over 43,000 tonnes was processed in the final week of crushing at Inkerman Mill, bringing the 2021 Burdekin crushing season to a close. The total season throughput for the Burdekin region was 7.88M tonnes.

The average weekly CCS fell to 11.49 due to the continued wet conditions. The provisional season CCS is 14.38 units.

The highest CCS sample was 14.8 from a rake of Q183 third ratoon.

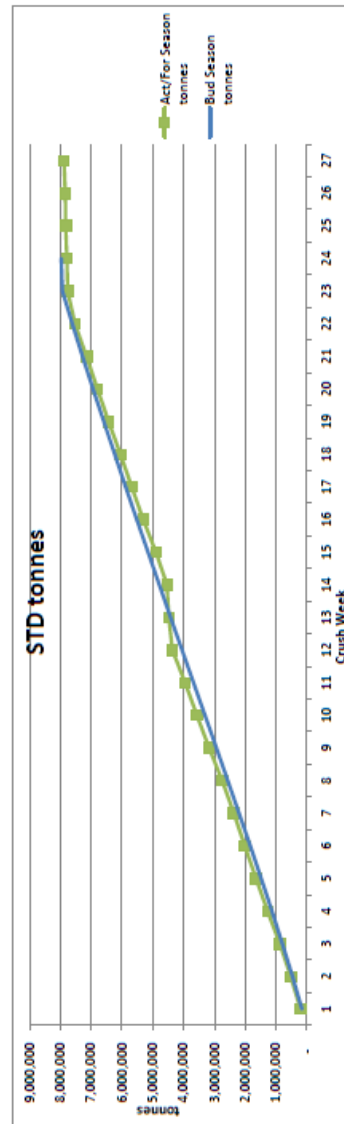
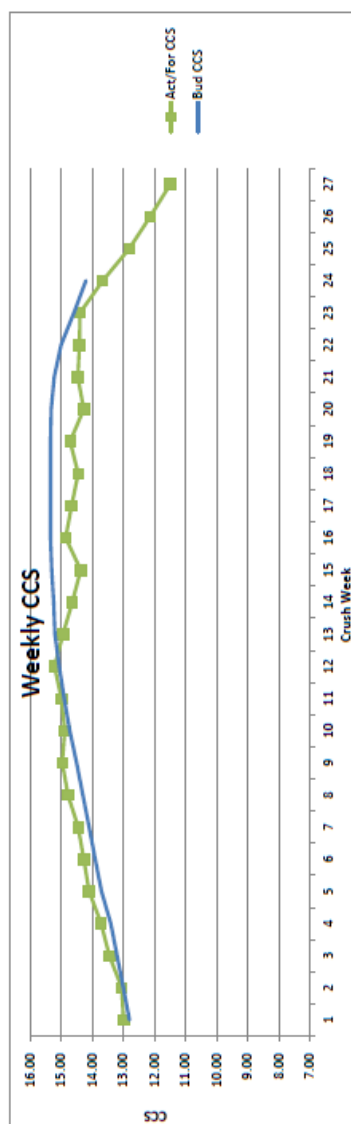
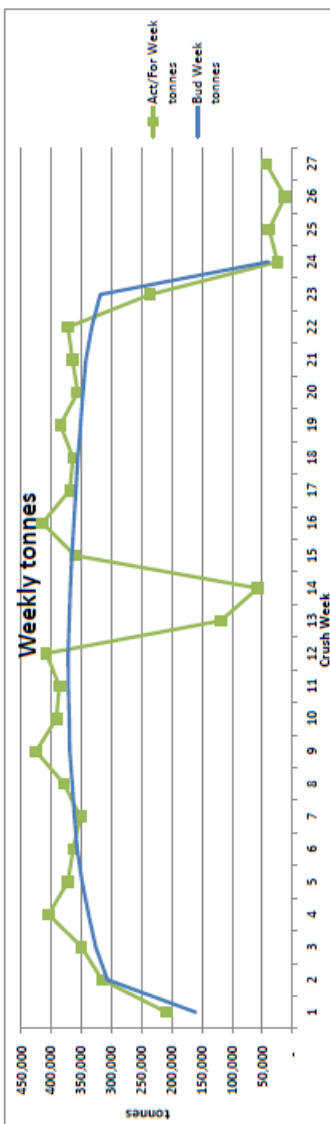
As this is the final production report for 2021, I would like to take this opportunity to thank everyone involved in growing, harvesting, transporting and crushing the 2021 crop.

For the broader Burdekin community, all the best for Christmas and the New Year. If you're heading off on holidays, please travel safely.

John Tait
Cane Supply Manager
Burdekin Region



11. Wilmar Budget vs Actual – Crush Week 27 – Posted – 13/12/21



BURDEKIN MILLS - 2021 SEASON									
Week Ending	BUDGET			ACTUAL / FORECAST			BUDGET		
	Rain Stops hrs	Bud Week tonnes	Bud Season tonnes	Rain Stops hrs	Act/For Week tonnes	Act/For Season tonnes	Bud CCS	Act/For CCS	Act/For CCS
12-Jun-21	24	160,873	160,873	0	209,078	209,078	12.80	12.99	12.99
19-Jun-21	22	307,248	467,921	26	316,387	525,465	13.00	13.05	13.05
26-Jun-21	20	326,549	794,470	10	350,091	875,556	13.20	13.45	13.45
03-Jul-21	18	338,563	1,133,033	2	404,602	1,280,157	13.40	13.71	13.71
10-Jul-21	16	349,073	1,482,106	0	372,701	1,652,858	13.70	14.10	14.10
17-Jul-21	15	357,450	1,839,556	0	363,869	2,016,727	13.90	14.27	14.27
24-Jul-21	14	361,998	2,201,554	0	352,261	2,368,988	14.10	14.45	14.45
31-Jul-21	14	365,542	2,567,096	0	379,019	2,748,007	14.30	14.78	14.78
07-Aug-21	13	368,750	2,935,846	0	425,770	3,173,777	14.50	14.96	14.96
14-Aug-21	13	370,649	3,307,495	0	392,039	3,565,816	14.72	14.88	14.88
21-Aug-21	12	371,980	3,679,475	0	386,553	3,952,668	14.90	14.99	14.99
28-Aug-21	12	372,401	4,051,876	0	408,578	4,361,346	15.06	15.21	15.21
04-Sep-21	12	370,504	4,422,380	114	119,098	4,480,445	15.20	14.94	14.94
11-Sep-21	12	368,762	4,791,142	145	57,452	4,537,897	15.24	14.64	14.64
18-Sep-21	12	366,192	5,157,304	19	361,104	4,899,001	15.30	14.37	14.37
25-Sep-21	12	362,755	5,520,059	2	414,946	5,313,947	15.34	14.85	14.85
02-Oct-21	12	359,470	5,879,529	0	363,786	5,683,733	15.34	14.66	14.66
09-Oct-21	12	356,398	6,235,927	0	364,397	6,048,130	15.34	14.45	14.45
16-Oct-21	12	351,711	6,587,638	0	385,287	6,433,417	15.34	14.71	14.71
23-Oct-21	12	347,732	6,935,370	5	356,512	6,790,029	15.32	14.27	14.27
30-Oct-21	12	342,757	7,278,127	0	365,150	7,155,179	15.22	14.46	14.46
06-Nov-21	14	333,140	7,611,267	0	372,573	7,527,752	15.00	14.41	14.41
13-Nov-21	16	318,955	7,930,222	10	236,495	7,764,248	14.59	14.39	14.39
20-Nov-21	3	39,778	7,970,000	57	24,658	7,788,905	14.20	13.66	13.66
27-Nov-21				41	38,511	7,827,516		12.81	12.81
04-Dec-21				125	12,360	7,839,876		12.13	12.13
11-Dec-21					43,117	7,882,993		11.49	11.49
	334	7,970,000		556	7,882,993		14.62	14.39	14.39

Comments:
Final week of crushing saw a throughput of just over 43,000 tonnes.
The average weekly CCS has fallen to 11.49 due to the effects of wet weather and resulting season length. YTD actual is 0.23 units down on budget.

FARMERS & FRIENDS

Join us

for a beer & laugh with mates
and a little bit of the
serious stuff ...

Mens Mental Health Evening

Friday 18th February 2022

Burdekin Memorial Hall

from 6.00pm til late

GUEST SPEAKERS

JOHNATHAN THURSTON & ANTONIO WINTERSTEIN

PRESENTATION BY



ARE YOU BOGGED MATE?



Tickets
\$50

Tables of 10 or individual tickets

*Includes a gourmet BBQ
Licenced Bar Open
Ages 16+*

Bookings via - www.burdekintheatre.com.au or contact 47839800

Proudly supported by

An initiative funded by the Queensland Government
Tackling Regional Adversity through Integrated Care grant program



**Queensland
Government**



13. LBW Director Nominations & Annual Shed Meetings – Posted – 16/12/21

Dear LBW Irrigators

The latest news from LBW, as well as important dates for the upcoming Director nominations and annual Shed Meetings, is as follows:

Director Nominations

The three year term for three of Lower Burdekin Water's ratepayer directors will expire on 14 October 2022. The Qld Water Act requires LBW to seek and provide suitable candidates to the Minister for Regional Development, Manufacturing and Water at least six months before a director's term ends. Therefore, LBW will be calling for nominations for the director positions on Monday 17 January 2022. Nominations will be open for four weeks closing on Friday 11 February 2022.

LBW's nomination and selection process is set out in its Governance Policy, which is available at the following link: <http://lowerburdekinwater.com.au/resource-library/documents/>

If you are interested in nominating for the positions and would like to find out more information, please contact the Executive Officer on 4783 1988 or at admin@lowerburdekinwater.com.au. Further information regarding the nomination process will be provided to ratepayers prior to the opening of nominations in January.

Important Dates:

Director nominations	7 January 2022
Director nominations close	11 February 2022
Suitable Candidates to be provided to Minister	14 April 2022
Minister to appoint Directors	14 October 2022

Russel Searle was recently welcomed onto the Board as a ratepayer Director. Russel is an experienced Board member having previously served as a Director on the North Burdekin Water Board for thirteen years.

Burdekin Falls Dam Project Update

The Burdekin Falls Dam Raising Project is a proposal to raise the existing dam as a potential means to increase water supply and security in the Burdekin region. Sunwater is preparing a detailed business case (DBC) to further investigate raising the dam. It is anticipated the DBC will be completed and submitted to the Queensland Government by the end of the year. The DBC considers the necessary dam safety requirements and the potential opportunity to raise the dam wall to improve long-term water security in the Burdekin region. More information can be found on the Sunwater website here:

<https://comms.sunwater.com.au/v/99228/1002609/email.html?k=cyoXB7yCNzoMD7NwllviZgcCtmTJNpXYfDaWk-jGOuqs>

Contestable Market

LBW has entered into a long term agreement for the supply wholesale electricity with the Queensland Government and CS Energy, a Queensland Government owned energy provider, who generate and sell electricity in the National Electricity Market (NEM). Potential savings will be realised through the LBW budget process.

Flowmeter WHS

Under WHS legislation, LBW is required to ensure a safe working environment for all employees. This extends to offsite locations such as customer open water pumps as employees perform meter reading activities at these

locations. An internal audit has commenced and safety issues identified during routine flowmeter reading activities, will require rectification by open water customers.

2022 LBW Shed Meetings

22nd February – Southern Division – 9am to 11am

23rd February – Northern Division – 9am to 11am

Venues to be advised. Please let us know if you would like an item added to the agenda.

Operational News

- All pump station temporary sand diversions (new legislation terminology for sand dams) have been constructed
- All pumpstations are currently operating
- We are heading into the annual peak demand period and as such, open water supply may be affected from time to time
- Operational staff will be delivering water over the Christmas/New Year period. Contacts for this period are as follows:
 - Southern Division
 - 17th December to 21st December – Glenn Pola – phone 0429 821 703
 - 22nd December to 31st December – Ray Ricca - phone 0408 821 703
 - 1st January to 4th January – Glenn Pola – phone 0429 821 703
 - Northern Division
 - 17th December to 26th December – Aaron Papale – 0407 169 962
 - 27th December to 10th January – Tino Molino – 0409 610 058
 - LBW office will be closed from Friday 17th December to Tuesday 4th January

Flinders University partner with LBW

LBW has partnered with Flinders University (FU) to undertake a research collaboration, investigating the groundwater resources of the Lower Burdekin Delta. The project is aimed at developing a hydrogeological conceptual model of the Delta groundwater system where rainfall, irrigation, channel leakage and groundwater and surface water interaction are quantified. Researchers from Flinders University in South Australia recently travelled to the Burdekin to commence a groundwater flow model of the study area. The project also aims to initiate several longer-term research activities to develop a longer-term program of research for the Lower Burdekin Delta.

Fiona Christie

Communications Officer

12 Airdmillan Road | PO Box 720, Ayr QLD 4807

Tel: Ayr: (07) 4783 1988

Email: fiona.christie@lowerburdekinwater.com.au | Web: www.lowerburdekinwater.com.au



The information in the email and any attachments are confidential. The information is intended to be for the use of the intended recipient. If you are not the intended recipient, be aware that any use of the contents of this information is prohibited. If you have received this message in error, please notify the sender by return email or notify Lower Burdekin Water by telephone at the Ayr Office 0747 831988 or Home Hill Office 0747 821703. It is your responsibility to scan this communication and any files attached for computer viruses and other defects. Lower Burdekin Water does not accept liability for any loss or damage however caused which may result from this communication or any files attached. Any personal comments contained within this email are those of the sender, not of Lower Burdekin Water. Please think of the environment before you print.

Kalamia Cane Growers Organisation Services

Offered to Members and Non-Members



KCGO in partnership with
Portsmith Petroleum (Puma)
are proud to provide
Bulk Fuel and Lubricant services
to KCGO Members & Non-Members
of the Burdekin Region.
Call now to take advantage
of our discounted pricing.

**Credit Card payment options available to
KCGO Members only**



**KALAMIA CANE
GROWERS
ORGANISATION
LIMITED (KCGOL)
&
KALAGRO LIMITED**

Located at:

140 Young Street, AYR

Office Hours:

Monday – Friday
8.30am – 4.30pm

Postal Address:

PO Box 597, AYR QLD 4807

Phone:

07 47 83 13 12

Email:

admin@kalagro.com.au

Web:

www.kalagro.com.au

Facebook:

KalamiaCaneGrowersOrgLtd



KCGO PROVIDES PAYROLL SERVICES

Service offered to KCGO Members & Non-Members

- Wages Preparation – Fair Work ATO & STP Compliancy
- Superannuation
- End of Financial Year Processing
- WorkCover – Premiums & Claims Assistance



BAS agent
25954836

Payroll Manager
Jacki Kratzmann

KCGO PAYROLL SERVICE CHARGES

Members

\$12.20 (incl GST) per Payslip

Non-members

\$14.15 (incl GST) per Payslip

All Clients

\$20.25 (incl GST) End of Financial Year Processing (per Employee)

Harvest Invoice Services



PREPARATION OF WEEKLY HARVEST INVOICE CHARGES

Service offered to KCGO Members & Non-Members

Members:

\$12.20 (incl GST) per Invoice

Non-members:

\$14.15 (incl GST) per Invoice

Postage Charges:

\$1.10 per Env.

Delivery Options:

- Invoices emailed
- posted
- KCGO office pickup option