



**KALAMIA CANE GROWERS
ORGANISATION LTD**



Weekly Web Round UP

Contents List

1. REMINDER – KCGO Member Discounted Health Insurance
2. SRAeNewsletter
3. Biosecurity News
4. BPS Shed Meetings Notice
5. P&K Farm Seed Cane Orders Reminder
6. Dale Last eNewsletter

KCGO MEMBER NOTICES

P&K Farm Tender – Farm Manager Role & Application

This role is up for tender.

The tender requirements and application are available from the KCGO or PCGO Office.

Any enquiries, please contact Dave Paine

Ph 47 83 13 12 or Mobile – 0447 128 312

REMINDER

The KCGO Election Notice has been posted to all members on

Friday, 18th February 2022. Due on the 11th March 2022

Nomination applications available at the KCGO office.

FRIDAY, 25TH FEBRUARY 2022

Kalagro Fuel Price

DIESEL - \$1.65894 including GST

UNLEADED - \$1.68213 including GST

Fuel Delivery Days – Monday, Wednesday & Friday



1. REMINDER** - KCGO MEMBER DISCOUNTED HEALTH INSURANCE OFFER



Corporate Health Insurance

Working together with Kalamia Cane Growers, we are excited to offer you a healthy corporate discount on your health insurance under the Kalamia Cane Growers Corporate Health Plan. Experience the Queensland Country difference with:

- ✓ **Healthy savings**
A 6% discount* on your annual policy premium.
- ✓ **A dedicated Corporate Partnership Manager**
Kim Anderson, your dedicated Corporate Partnership Manager will be happy to help you with any questions you may have.
- ✓ **Easy to understand products**
Our products are easy to understand and provide our Members with great value for money and peace of mind.
- ✓ **Excellent service**
We're here to help. Our commitment to helping our Members is second to none with fast and friendly service both face to face or over the phone.
- ✓ **National Coverage**
We provide coverage anywhere in Australia, giving you peace of mind wherever you work, live or play.
- ✓ **95% Member satisfaction rating^**
- ✓ **Generous benefits**
Our benefits help promote a healthy lifestyle and based on direct Member feedback, are regularly reviewed to ensure they remain competitive.
- ✓ **Easy claiming**
Claim easily anywhere, anytime through our Mobile App by simply uploading a photo of your receipt or via our Online Member Services portal.

If you have any questions or for more information contact your dedicated Corporate Partnership Manager, Kim today!



**Queensland
Country
Health Fund**

0417 622 856 • kanderson@queenslandcountry.health

* The corporate discount is provided under the Kalamia Cane Growers Corporate Health Plan and is applied to the gross premiums at the chosen level of cover.
^Source: January 2021 Member Satisfaction Survey, 63% were very satisfied and 32% were somewhat satisfied from 1,494 respondents.

Already a Member with Queensland Country?

We'll give you a
\$100*
Gift Card!

If they take out an eligible singles policy

We'll double it for a couple or family!



Great news if you're already a Member you'll now be eligible to receive a **corporate discount*** on your premium! To receive this discount simply complete the Apply Discount Form on your health insurance portal. Once you have submitted the request form, we will confirm via email or post that the discount has been applied.

ALSO, don't forget to **refer a friend, family member, colleague or work mate** to Queensland Country and if they take out an eligible singles policy during the promotional period you'll receive a \$100 Visa Gift Card*. And we'll double it for couples or family policies!

Make sure you tell your friend when joining to provide us with your name and contact details, so we can send you your gift card.

There is no gift card limit, so tell as many friends as you like!!



**Queensland
Country**
Health Fund

0417 622 856 • kanderson@queenslandcountry.health

* The corporate discount is provided under the Kalamia Cone Growers Corporate Health Plan and is applied to the gross premiums at the chosen level of cover. * Offer valid until 31 December 2021. The referring person must be an existing Queensland Country Health Fund policy holder. Available to new Silver and Bronze Hospital policies only. Available with corporate discount offers, but not in conjunction with any other offer. Terms and conditions apply and are available at queenslandcountry.health Queensland Country Health Fund Ltd ABN 18 086 048 237.

2. SRA eNewsletter – Posted 18/2/22



Halfway through February and the calendar is filling with interesting events for members. Be sure to check the events list for your location and register today.



Team responsive to grower issues

An SRA entomologist has helped a cane grower south of Sarina identify a pest in his crop, without the need for expensive follow up action. The grower noticed the tender young leaves of his plant cane were being eaten and armyworm was found in several paddocks.

Due to recent publicity, the grower was concerned that the pest could be Fall armyworm (FAW). SRA district staff collected samples and took photos of the leaf damage to send to SRA entomologist, Dr Pauline Lenancker (pictured) in Meringa for identification.

“Fortunately, the armyworm turned out to be a common armyworm species, not FAW, and no spraying was necessary,” said Dr Lenancker. “There are many species of armyworm in the sugar industry and they often look very much alike. However, not all of them are a threat to yields. If you suspect fall armyworm and would like a conclusive identification please contact SRA. We welcome the opportunity to help you.”

Soil test data sought

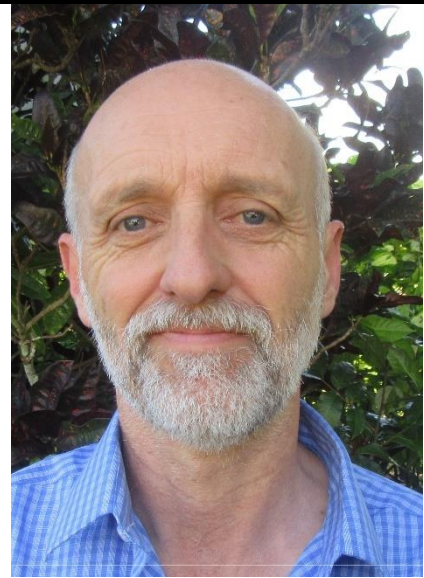
A new Australian Government program will offer payment to farmers and other land managers for sharing their historical soil test data. The \$21 million program will fund land managers to contribute to a publicly available database. A tender has been opened seeking service providers to perform the role of data brokers.

[READ MORE](#)

YCS confirmed for some, not all, yellowing crops

After several reports of sugarcane exhibiting potential yellow canopy syndrome (YCS) symptoms in the Herbert, SRA experts, in collaboration with Herbert Cane Productivity Services Limited, examined several blocks in the region. Following thorough assessment by SRA Entomology Leader, Dr Kevin Powell (pictured), some fields were confirmed to exhibit YCS characteristics, particularly in the Macknade area.

“Although there are some pockets of yellowing in the district, YCS is by no means widespread and not all the yellowing observed is characteristic of classic YCS symptoms,” said Dr Powell. “Some may be remnants of old YCS symptoms, which the cane appears to be growing out of, and some is due to leaf deterioration caused by a variety of factors.”



Monitoring plan enacted

Four monitoring sites on paddocks showing typical YCS symptoms have been established in the Herbert to collect relevant data.

This includes setting up sticky traps and collecting leaf samples every fortnight until the end of April at sites in the Orient, Burnside, Macknade, and Blackrock areas.

“This data will be collected and sent to Meringa for further analysis,” said SRA District Manager Herbert Phil Patane.

“The data will be incorporated with other datasets which are being collected from the Burdekin, north Queensland and central regions. YCS remains a productivity constraint and SRA’s targeted sampling strategy in all districts will assist in better understanding the cause.”

Updates will occur in the district prior to the start of the 2022 crush. For more information [contact Herbert District Manager Phil Patane.](#)

Department recognises BMP accredited growers

The Queensland Department of Environment and Science (DES) has recognised growers committed to improved sugarcane farming practices. Growers accredited under the Smartcane Best Management Practice (BMP) program do not need to pay for an external ‘appropriate person’ to develop or verify their farm nitrogen and phosphorus budgets before applying fertiliser.

Since December, growers in the Wet Tropics, Burdekin and Mackay Whitsunday areas have been required to develop an N and P budget under the Reef regulations. Those who are

accredited under Smartcane BMP already have the relevant qualifications, training, skills and experience to develop their own N and P budgets.

They will also be the lowest priority for compliance inspections under the regulations.

To begin your journey to Smartcane BMP accreditation visit: www.smartcane.com.au



Farm management tender open

Maintaining the highest levels of cleanliness and hygiene are key criteria in a farm management contract on offer for an 85 hectare cane farm in the Burdekin. P&K Farming hosts a 45 ha seed cane distribution plot and a four ha seed cane mother plot on the property, on behalf of SRA and Burdekin Productivity Services at Ayr.

Approved sugar cane varieties bred by Wilmar Sugar and SRA are treated, propagated and distributed from the plot to Burdekin growers as clean seed cane.

Cleanliness and hygiene are essential, in line with the high standard established by SRA's technical guidelines: *Procedures for the Establishment and Operation of Approved-Seed Plots*.

The contract also requires a high standard of performance of normal farming operations in consultation with P&K Farming.

The Boards of the Pioneer Cane Growers Organisation and the Kalamia Cane Growers Organisation have called for tenders, which close at 5 pm, Monday 28 February. For more information and to obtain the tender documents [email Lisa Parker](#), Manager, PCGO.

Upcoming Events

Tully - Nutrient Rate Control Technology grower shed meeting

24 February

Woodford - Identifying sugarcane diseases workshops

1-2 March: experienced advisors and industry

3-4 March: industry newcomers

Burdekin - Farm Economic Analysis Tool (FEAT Online) workshops

10 March and 11 March

Mackay - SIX EASY STEPS® Nutrient Management workshop

15 March

[See all event details](#)

Follow Us



BIOSECURITY NEWS

February 2022



Serious new dog disease in Queensland

The [tick-borne dog disease ehrlichiosis](#) has been recently confirmed in a Queensland dog.

It is reported that this dog had not travelled outside of Queensland, meaning the disease has likely found its way into our local tick population.

Ehrlichiosis can make dogs very sick – and without treatment can kill them.

It is important you use anti tick products on your dogs to stop the ticks from biting them and spreading the disease.

Talk to your veterinarian about the best tick products to use or if your dog is sick.



Brown marmorated stink bug border detections – be aware of pests in imported goods

The Department of Agriculture, Water and the Environment and the Department of Agriculture and Fisheries is responding to a significant detection of [brown marmorated stink bug \(BMSB\)](#) at Burleigh Heads on the Gold Coast, and Hamilton in Brisbane.

Live stink bugs were detected when an importer at Burleigh Heads was unpacking goods from two shipping containers in a consignment of five containers, imported from China.

DAWE biosecurity officers found multiple live, dying and dead stink bugs in another two containers and observed at least one bug flying off into nearby vegetation.

Following the detection, DAWE traced consignments from the same supplier of goods in China to a site at Hamilton in Brisbane.

DAWE and DAF have deployed 39 traps at Burleigh Heads and 21 traps at Hamilton, forming a 500m surveillance zone around each site. DAWE has also surveyed both sites using their Detector Dog team.

If you suspect you have seen BMSB, whether it's dead or alive, try to capture the insects in a container, take a photo and report the location to DAF by phoning 13 25 23 or report [online](#).

[Read more about BMSB.](#)

Image credit: David R. Lance



Global avian influenza situation

More than 40 countries in the world have reported cases of [avian influenza \(AI\)](#) over the last 6 months.

Poultry owners are being urged to increase their biosecurity measures and bird enthusiasts are being encouraged to act if you notice AI signs.

Signs in birds include coughing, sneezing, difficulty breathing, swelling of the head, eyes, comb and wattles, decreased egg production and high mortality. Contact your veterinarian if your birds develop any of these signs.

If you suspect AI or notice large numbers of sick or dead birds including wild birds, contact the Emergency Animal Disease Watch Hotline on 1800 675 888.



Australian Biosecurity Symposium is coming to Queensland

The 2nd Australian Biosecurity Symposium is set to take place from 3-5 May on the Gold Coast.

Don't miss out on the opportunity to be a part of the decade of biosecurity, where delegates will be turning a moment into a movement!

After more than two-years of virtual meetings, now is the time to meet face-to-face and exchange knowledge and ideas across the biosecurity collective – agriculture, (animals and plants), pest animals, weeds, wildlife, aquatics, humans and the environment.

[Register here.](#)



Asian honeybees are on the move

Travelling from the area around Cairns, Daintree, Atherton Tableland, or the Tully area to other parts of Queensland?

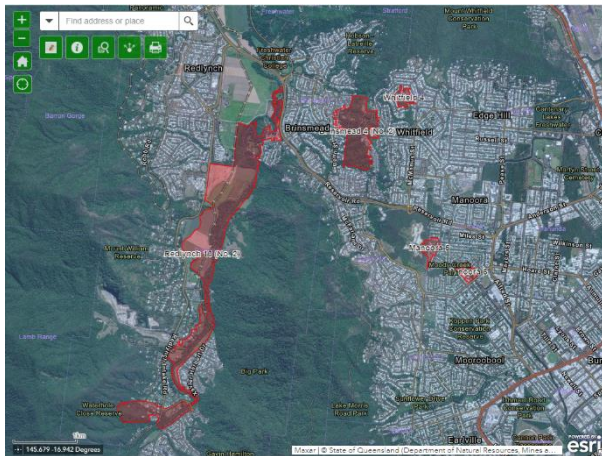
You can help stop the spread of Asian honeybees!

[Asian honeybees](#) occur in parts of north Queensland, particularly around Cairns, the Atherton Tableland and south to the Tully area.

You could be spreading the pest to unaffected areas which could disrupt crop pollination and carry pests and diseases, which would impact honey and food production.

Stop the spread by checking your vehicle, trailer, caravan, or boat for bees before each trip.

Report any suspect Asian honeybees by calling 13 25 23 or via our [online portal](#).



Are electric ants in your area?

Last month, the restricted zones for electric ants were updated. Several areas have either been removed or reduced in size, while others were added following detection of electric ants.

Visit daf.qld.gov.au/electricantmap for the latest information.

And please remember that movement controls are in place in these areas to stop the spread of this invasive ant.

You can book your free yard check for electric ants at daf.qld.gov.au/anthunt



Spray drift reminder

We're joining Cotton Australia to remind farmers to check agricultural chemical labels, track weather conditions and apply best practice to minimise spray drift and avoid off-target damage this spraying season.

Spray drift management strategies reduce the risk of unintended impacts to neighbours and the environment and ensure more herbicide lands where it should, to maximise weed control.

You can find more detailed information on the [responsible use of agricultural chemicals and spray drift prevention and reporting](#).



Having trouble viewing this email? [View Online](#)

For more information visit biosecurity.qld.gov.au or call 13 25 23



This email was sent by the Department of Agriculture and Fisheries to manager@kalagro.com.au

4. BPS Shed Meetings Notice – Posted – 21/2/22

Good Morning Members,

Shed meetings are kicking off at the end of next week, BPS, Farmacist and SRA will be presenting on a range of topics including:

- Productivity Reports for 2021 season
- Variety trial data for SRA23 and WSRA17
- Sorghum and grass control strategies
- Irrigation
- Spray efficacy and technology
- Fall Army Worm
- RSD update

Dates and times are listed below for meetings. Feel free to attend another meeting if you cannot make your usual shed meeting.

Note that BBQ breakfast or lunch will be provided, to be served at the meeting start time, then kick off shortly after that.

If you have any questions or other topics you would like discussed, feel free to contact me.

Thanks

Rob

Rob Milla
Manager- Burdekin Productivity Services
0490 036 329
rmilla@bps.net.au

Date	Time	Group	Venue
Fri 4th Mar	8:00am	Clare/Mulgrave/Stockham Rd/Millaroo	Clare Club
Mon 7th Mar	8:00am	Osborne/Causeway/Leichhardt	R Piva
Mon 7th Mar	12:30pm	Inkerman/Fredericksfield/Groper Creek	G MacElroy
Tue 8th Mar	8:00am	Jardine/Mona Park/Barratta	Smith's Shed
		Selkirk/Haughton/Bartlett/ Upper	
Tue 8th Mar	12:30pm	Haughton/Giru/Shirbourne	SISL
Wed 9th Mar	8:00am	Aerodrome/Colevale/Town/Pioneer Mill	B Lago
Tue 29th Mar	8:00am	Airville/Dicks Bank/McDesme	BPS Shed
Tue 29th Mar	12:30pm	Waterview/Sextons	E Pearce
Wed 30th Mar	8:00am	Koolkuna/Marshalls/Iona	R Wall
Wed 30th Mar	12:30pm	Darvenizas/Down River/Ramsdens	Canegrowers Hall
Thur 31st Mar	8:00am	Airdmillan/Burstalls	N Formalin
Thur 31st Mar	12:30pm	Jarvisfield/Kilrie/Rita Island	Quartermaine

5. P&K Farm – Seed Cane Orders Reminder – Posted – 21/2/22



MEMBERS CIRCULAR

RE: SEED CANE ORDERS DUE BY 25 FEBRUARY 2022

BPS requires seed cane orders to be submitted to your BPS Field Officers by 25 February 2022.

We are advised that there are limited supplies of KQ228, so if you do wish to order this variety please do so as soon as possible.

Please do not hesitate to contact your respective manager if you have any questions.

Lisa Parker
MANAGER AND COMPANY SECRETARY
Pioneer Cane Growers Organisation Ltd

David Paine
MANAGER AND COMPANY SECRETARY
Kalamia Cane Growers Organisation Ltd



2022 BPS SEEDCANE ORDER

FARM NAME:

FARM NUMBER:

BLOCK NUMBER:

VARIETY	QUANTITY (t)
Q240	
KQ228	
Q208	
Q232	
Q183	
WSRA17	
SRA23	

To ensure adequate allocation of clean cane supplies for the 2022 planting season, could you please take the time to fill out and return the above order form to your BPS field officer as soon as possible. Orders placed after 25th Feb cannot be guaranteed.

Any enquires please contact your relevant field officer.

Pioneer - Madeline Molino

Mobile: 0407 167 159

BPS office: 47831101

Email: mmolino@bps.net.au

Inkerman - Wayne Johnstone

Mobile: 0407 960 057

BPS office: 47831101

Email: wjohnstone@bps.net.au

Invicta – Joseph Magatelli

Mobile: 0427 372 124

BPS office: 47831101

Email: jmagatelli@bps.net.au

Kalamia – Eddie Fabbro & Kristine Patti

Mobile: Eddie – 0447 209 152 Kristine – 0427 167 159

BPS office: 47831101

Email: efabbro@bps.net.au or kpatti@bps.net.au



Standing with farmers on Reef Regulations

In my time living in regional Queensland and representing the state's largest sugar cane growing region one thing is for certain, our farmers know that the health of the land producing food for our nation, is the most valuable asset they have.

It's a key fact, that was at the fore today when debate commenced on a Bill relating to the Reef Regulations. While debate on the Bill will most not likely not conclude until either the March or April sittings of parliament, it is important that you know that the LNP introduced amendments to Labor's Reef Regulations.

What these amendments will mean is that farmers who participate in Best Management Practices (BMP) or similar accredited program, will be entirely exempt from Labor's draconian and excessive Reef Regulations.

It's a simple solution and most importantly, it's based on respect and recognition.

The respect the LNP have for you as primary producers, and the recognition that primary production is just as important as the Reef.

Unlike Labor's Reef Regulations, the LNP's amendments are recognition for the investment that farmers right across the state and particularly in the Burdekin, have already made off their own backs. Investments like farmers' efforts to recycle water, planting of alternate crops to lock nitrogen in the soil and leaving paddocks fallow.

The reality is you, as primary producers, have kept our state and our nation fed, during what has been a fearful and confusing time in history, we owe it to you to ensure that state legislation acknowledges you and your efforts as stewards of the land.

I have always backed our farmers and I will continue to do so going forward.

Thank you for your hard work.

Dale



Here to help

If you or someone you know has an issue that you need help with, please remember my job is to represent you. I may not always be able to fix the problem... but rest assured I will always do my best.

If you need assistance, please email burdekin@parliament.qld.gov.au or call 1800 817 594.

How Dale Last can help you!



As your State MP I am responsible for:

Agriculture	Sport and Recreation
Health and Public Hospitals	Racing
Main Roads	Energy and Water Supply
Education and TAFE	Transport
National Parks	Public Housing
Disability Services	Community Services
Police and Emergency Services	Tourism
Attorney-General	Planning and Infrastructure
	State Government Land



Your Federal Member is responsible for:

Aged Care	Telecommunications and NBN
Centrelink	Trade
Child Support	Indigenous Affairs
Aviation	The ABC and SBS
Defence	Environment
Foreign Affairs	Bureau of Meteorology
Immigration and Visas	CSIRO
Medicare	



Your Local Council is responsible for:

Local Roads	Rubbish Collection
Footpaths	Council by-laws
Animal Control	Water, Drainage and Wastewater
Parks and Recreation	Feral Pest Control
Rates	Local Planning and Building Approvals

Kalamia Cane Growers Organisation

Services

Offered to Members and Non-Members



KCGO in partnership with
Portsmouth Petroleum (Puma)
are proud to provide
Bulk Fuel and Lubricant services
to KCGO Members & Non-Members
of the Burdekin Region.
Call now to take advantage
of our discounted pricing.

Credit Card payment options available to
KCGO Members only

**KALAMIA CANE
GROWERS
ORGANISATION
LIMITED (KCGOL)
&
KALAGRO LIMITED**

Located at:

140 Young Street, AYR

Office Hours:

Monday – Friday
8.30am – 4.30pm

Postal Address:

PO Box 597, AYR QLD 4807

Phone:

07 47 83 13 12



Email:

admin@kalagro.com.au

Web:

www.kalagro.com.au

Facebook:

KalamiaCaneGrowersOrgLtd



KCGO PROVIDES PAYROLL SERVICES

Service offered to KCGO Members & Non-Members

- Wages Preparation – Fair Work ATO & STP Compliancy
- Superannuation
- End of Financial Year Processing
- WorkCover – Premiums & Claims Assistance



BAS agent
25954836

Payroll Manager
Jacki Kratzmann

KCGO PAYROLL SERVICE CHARGES

Members

\$12.20 (incl GST) per Payslip

Non-members

\$14.15 (incl GST) per Payslip

All Clients

\$20.25 (incl GST) End of Financial Year Processing (per Employee)

Harvest Invoice Services



PREPARATION OF WEEKLY HARVEST INVOICE CHARGES

Service offered to KCGO Members & Non-Members

Members:

\$12.20 (incl GST) per Invoice

Non-members:

\$14.15 (incl GST) per Invoice

Postage Charges:

\$1.10 per Env.

Delivery Options:

- Invoices emailed
- posted
- KCGO office pickup option