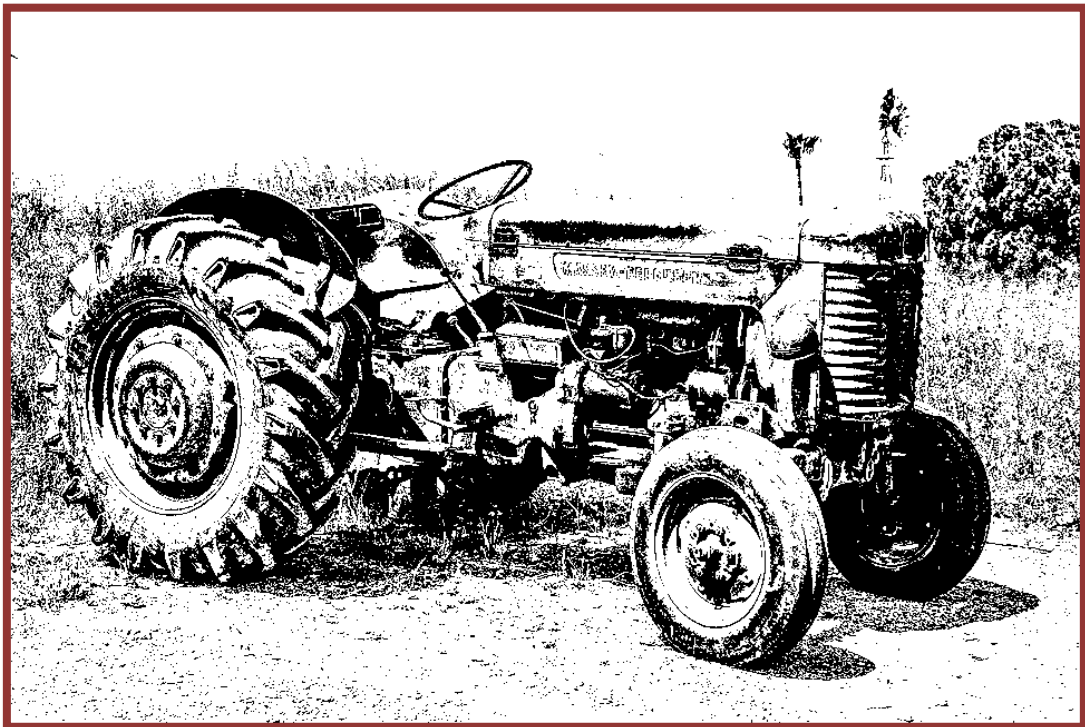


KCGO

**KALAMIA CANE GROWERS
ORGANISATION LTD**



Weekly Web Round Up

Contents List

1. REMINDER – KCGO Member Discounted Health Insurance
2. Farming in Focus Forum
3. Women in Sugar Annual Conference
4. Biosecurity Alert
5. Farm Business Resilience Workshop
6. QLD Govt Media Release – COVID Restrictions Ease Further
7. QSL Event Invitation – Pre-season Update

KCGO MEMBERS NOTICE

Chemical & Nutrient Application/Record Books are now available at the KCGO office for members who require them for their farming practises.



KALAGRO NEWS

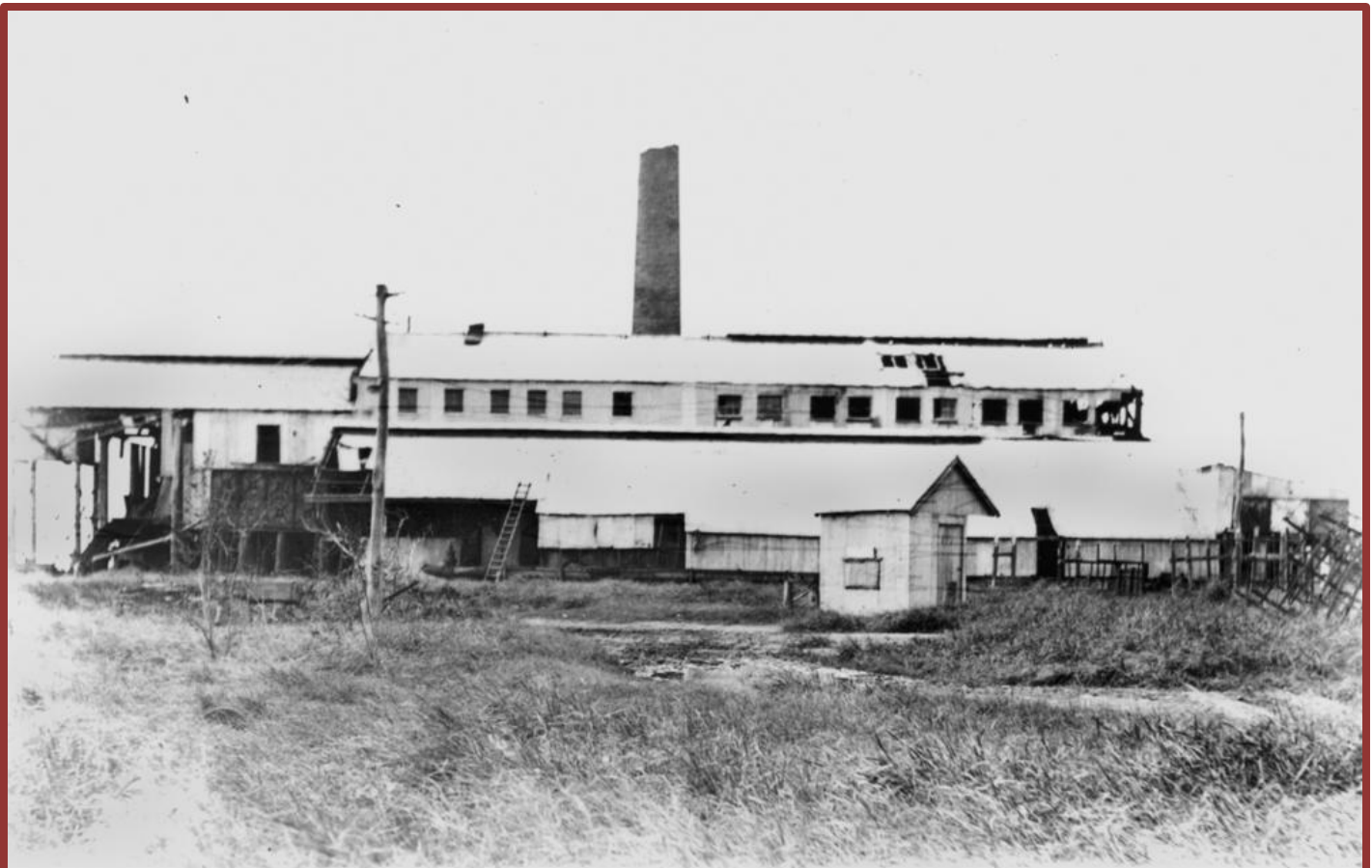
FRIDAY, 8TH APRIL 2022

Kalagro Fuel Price

DIESEL - \$1.69729 including GST

UNLEADED - \$1.54408 including GST

Fuel Delivery Days – Monday, Wednesday & Friday



1. REMINDER** - KCGO MEMBER DISCOUNTED HEALTH INSURANCE OFFER



Corporate Health Insurance

Working together with Kalamia Cane Growers, we are excited to offer you a healthy corporate discount on your health insurance under the Kalamia Cane Growers Corporate Health Plan. Experience the Queensland Country difference with:

- ✓ **Healthy savings**
A 6% discount* on your annual policy premium.
- ✓ **A dedicated Corporate Partnership Manager**
Kim Anderson, your dedicated Corporate Partnership Manager will be happy to help you with any questions you may have.
- ✓ **Easy to understand products**
Our products are easy to understand and provide our Members with great value for money and peace of mind.
- ✓ **Excellent service**
We're here to help. Our commitment to helping our Members is second to none with fast and friendly service both face to face or over the phone.
- ✓ **National Coverage**
We provide coverage anywhere in Australia, giving you peace of mind wherever you work, live or play.
- ✓ **95% Member satisfaction rating^**
- ✓ **Generous benefits**
Our benefits help promote a healthy lifestyle and based on direct Member feedback, are regularly reviewed to ensure they remain competitive.
- ✓ **Easy claiming**
Claim easily anywhere, anytime through our Mobile App by simply uploading a photo of your receipt or via our Online Member Services portal.

If you have any questions or for more information contact your dedicated Corporate Partnership Manager, Kim today!



**Queensland
Country
Health Fund**

0417 622 856 • kanderson@queenslandcountry.health

* The corporate discount is provided under the Kalamia Cane Growers Corporate Health Plan and is applied to the gross premiums at the chosen level of cover.
**Source: January 2021 Member Satisfaction Survey, 63% were very satisfied and 32% were somewhat satisfied from 1,494 respondents.

Already a Member with Queensland Country?

We'll give you a
\$100*
Gift Card!

If they take out an eligible singles policy

We'll double it for a couple or family!



Great news if you're already a Member you'll now be eligible to receive a **corporate discount*** on your premium! To receive this discount simply complete the Apply Discount Form on your health insurance portal. Once you have submitted the request form, we will confirm via email or post that the discount has been applied.

ALSO, don't forget to **refer a friend, family member, colleague or work mate** to Queensland Country and if they take out an eligible singles policy during the promotional period you'll receive a \$100 Visa Gift Card*. And we'll double it for couples or family policies!

Make sure you tell your friend when joining to provide us with your name and contact details, so we can send you your gift card.

There is no gift card limit, so tell as many friends as you like!!



**Queensland
Country**
Health Fund

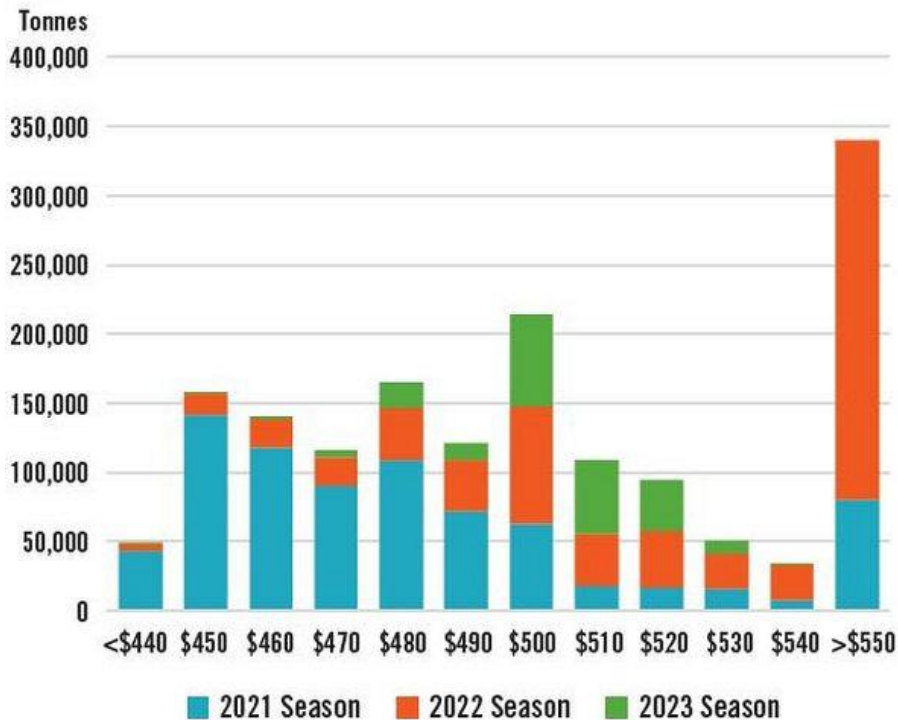
0417 622 856 • kanderson@queenslandcountry.health

* The corporate discount is provided under the Kalamia Cone Growers Corporate Health Plan and is applied to the gross premiums at the chosen level of cover. * Offer valid until 31 December 2021. The referring person must be an existing Queensland Country Health Fund policy holder. Available to new Silver and Bronze Hospital policies only. Available with corporate discount offers, but not in conjunction with any other offer. Terms and conditions apply and are available at queenslandcountry.health Queensland Country Health Fund Ltd ABN 18 086 049 237.

2. QSL Information Brief – Monday, 4th April 2022 – Posted – 5/4/22



- Grower-managed pricing levels for the 2022 Season are well advanced, with QSL growers locking in over 250,000 tonnes of pricing to date above \$550/tonne gross actual, as detailed in the chart below. For more information about current grower pricing levels and key sugar market themes, including the impact of the Russia/Ukraine conflict, read our latest Grower Pricing Update, available by [clicking here](#).



- **Farming in Focus Forum** – QSL is the proud sponsor of the **Farming In Focus** 1-day forum to be held at the Ayr Showgrounds on **Friday 27 May**. Forum topics will provide insights into:
 - Diversification opportunities
 - Supply chain information
 - Carbon farming opportunities
 - Building business resilience
 - Practical experiences and case studies

Flyer attached to this email.

- **Harvest Pool Opt Out – New for 2022 Harvest Pool Opt Out** - Leave the QSL Harvest Pool at any time during the season and price more yourself using QSL's new **Harvest Pool Opt Out**. Just choose to 'Opt Out' and any of your Harvest Pool tonnage which has not already been priced by QSL will be transferred to the Self-Managed Harvest Contract so you can price it yourself. **Available to QSL Direct growers from 1 May 2022**. For more information [please click here](#), or contact your local QSL team.

Key Dates

- **15 April:** May 2022 ICE 11 contract Pricing Completion Date for growers using the Individual Futures Contract and Self-Managed Harvest Contract.
- **15 April:** Pricing Completion Date for the 2022-Season Defaulting Target Price Contract & Grower Floor Price Contract.
- **30 April:** This is the last day to nominate which QSL pools and pricing products you'd like to use for the 2022 Season.

Industry Events Proudly Supported by QSL

ASSCT (Australian Sugar Cane Technologists) Conference

19 – 22 April 2022 | Mackay Entertainment & Convention Centre

For more information or to register, head to assct.com.au.

Mackay Ag Trade Expo

13 – 14 May 2022 | A two-day showcase and celebration of all things agriculture. For more information visit mackayagtradeexpo.com.au

Women in Sugar Australia

26 – 27 May 2022 | Burdekin Theatre, Ayr

Annual Women in Sugar Conference, this year hosted by the Women in Sugar Burdekin Group. For more information and tickets click [HERE](#)

Farming in Focus Forum

27 May 2022 | Ayr Showgrounds

For more information visit [Sweet Days Hot Nights Festival unveils two-year program – Burdekin Shire Council](#).

[Click here to Book your tickets](#)

If members have any questions in regards to the above, please don't hesitate to get in contact with:

- Russell Campbell - Grower Relationship Manager – 0408 248 385
- Kristen Paterson - Grower Relationship Officer– 0438 470 235
- Rebecca Love – Grower Relationship Officer – 0429 054 330 (Mon-Wed)

Rebecca Love

Grower Relationship Officer - Burdekin

Mobile 0429 054 330

rebecca.love@qsl.com.au

www.qsl.com.au

HARVEST POOL OPT OUT

NEW FROM 1 MAY 2022

[Click here for more information >](#)



3. Farming in Focus Forum – Posted – 5/4/22

Connecting growers with opportunities



2022 FARMING *in focus* FORUM

Proudly supported by  QSL

DATE:
FRIDAY, 27 MAY

TIME:
8:30AM - 4.30PM

VENUE:
AYR SHOWGROUNDS HALL

**ARE YOU A SUGAR
CANE GROWER**
INTERESTED IN EXPLORING
NEW OPPORTUNITIES
TO BOOST YOUR SUGAR
PRODUCTION?



**ARE YOU LOOKING TO
EXPAND, DIVERSIFY AND
MAKE NEW CONNECTIONS
TO GROW AND SUPPORT
YOUR SUGAR CANE
OPERATIONS?**

Come along to this one-day forum to gain insights into boosting your profitability. The forum will cover:

- ◆ BUILDING BUSINESS RESILIENCE
- ◆ SUPPLY CHAIN INFORMATION
- ◆ CARBON FARMING OPPORTUNITIES
- ◆ DIVERSIFICATION OPPORTUNITIES
- ◆ PRACTICAL EXPERIENCES & CASE STUDIES

Tickets are limited – get in quickly to secure your seat.

**EXHIBITOR
OPPORTUNITIES
ALSO AVAILABLE**

(Limited number available - both indoor & outdoor)

\$50/space

(inc. table & 2 chairs)



REGISTER ONLINE NOW

trybooking.com/BXWKT

Early bird registration fee: \$55/person (until Friday, 15 April)

Full registration fee: \$70/person (from 16 April)

**PROGRAM
RELEASED
SOON!**

**CONTACT BURDEKIN SHIRE COUNCIL'S ECONOMIC
DEVELOPMENT TEAM FOR MORE INFORMATION**

P (07) 4783 9800 **E** economic@burdekin.qld.gov.au

W www.burdekin.qld.gov.au



Women in Sugar Australia

ANNUAL CONFERENCE 2022

MAY 26 - 27
CONFERENCE, DINNER, BUS TOUR

*Nourish
to
Flourish*

Book Tickets Online



Scan HERE

Hosted at

**BURDEKIN
THEATRE**

Contact Women in Sugar Burdekin for
Registration Details

Phone: Lisa 0427 826 926

Email: womeninsugarburdekin@hotmail.com



*Women in Sugar
Burdekin Inc*



4 April 2022

Suspected tilapia in Cooby Creek

Biosecurity Queensland is investigating a suspect report of the invasive pest fish species tilapia in Cooby Creek, downstream of Cooby Dam, north of Toowoomba.

Cooby Creek is a tributary that flows into the Murray Darling Basin. If confirmed, this would be the first-time tilapia have been found in this catchment.

Tilapia were introduced into Australia in the 1970s as ornamental fish and are now a major threat to Australia's native biodiversity.

Photographs of the fish were provided to Biosecurity Queensland on 24 March but were inconclusive.

Biosecurity officers have conducted initial sampling in the area, but no tilapia have been found.

More extensive sampling will be undertaken, including environmental DNA sampling, but recent flooding has limited access. It is expected further sampling will not be possible for the next week or two.

Habitat and environmental impact

Studies have shown that around half of the Murray-Darling Basin is currently suitable habitat for tilapia, including parts of New South Wales, Victoria and South Australia.

It is expected that tilapia would have significant impacts on a range of native species, and lead to reduced water quality in this system if established.

In contained waterways (ponds and small dams), poisons can be used to completely remove pest fish—these are not effective for open waterways such as Cooby Creek. There are currently no effective control methods for tilapia in open waterways.

How are they spread?

Tilapia are now widespread on the east coast of Queensland. However, Biosecurity Queensland maintains a strict 'no-take' approach to reduce the spread of this noxious fish. Tilapia are restricted matter under the *Biosecurity Act 2014*.

Most new infestations are caused by people moving live fish between catchments. This includes private dam stocking and moving tilapia between catchments to use as bait, or to create new 'fisheries'.

What to look for

Spotted tilapia (*Tilapia mariae*)



- Ranges from dark olive-green to light yellow.
- 8 or 9 dark bars or blotches on the sides (obvious in younger fish).
- Grows to 30cm.
- Deep-bodied with a thin profile and long pointed fins.

Mozambique tilapia (*Oreochromis mossambicus*)



- Grows to more than 36cm.
- Lives up to 13 years.
- Usually dark grey or almost black but can be silver with 2–5 dark blotches/spots on the side.

- Breeding males can have red tips on their fins.
- Deep-bodied with a thin profile and long pointed fins.

What to do if you suspect tilapia

If you see something you think might be tilapia, take a photo and note the exact location, and call Biosecurity Queensland on 13 25 23 or [report it online](#).

If you catch tilapia in the wild, humanely kill them and do not return them to the water.

For more information visit [Business Queensland](#).



6. Farm Business Resilience Workshop – Posted – 5/4/22



Farm Business Resilience Plans

Can your business survive succession, market shocks and wild weather?

Do you have a written business plan?

Join Rural Financial Counselling Service North Queensland for a free, interactive workshop designed to support Burdekin primary producers through

- Identifying ways to improve your business' resilience to drought and natural disasters
- Drafting a business plan
- Applying for Drought Assistance Grants or Concessional Loans through QRIDA

Date

Friday, 22nd April, 2022

Time

9am-3pm

RSVP

office@pcgo.com.au

Address

142 Young Street, Ayr

Bring

A laptop or lined paper

This initiative is jointly funded under the Commonwealth/State Disaster Recovery Funding Arrangements "Community Development Program".



RFCSNO is a RAPAD business delivering the Australian and Queensland Government funded Rural Financial Counselling Service program.

7. QLD Government Media Release – Covid Restrictions ease Further – Posted – 5/4/22



Media release

JOINT STATEMENT

Premier and Minister for the Olympics

The Honourable Anastacia Palaszczuk

Minister for Health and Ambulance Services

The Honourable Yvette D'Ath

COVID restrictions ease further

Premier Anastacia Palaszczuk has announced the further easing of COVID restrictions.

As of 1am, Thursday April 14, most venues that have been open only to vaccinated staff and patrons will be open to all.

The venues include:

- Pubs, clubs, cafes and restaurants
- Theme parks, casinos and cinemas
- Weddings
- Showgrounds
- Galleries, libraries, museums and stadiums

The requirement for vaccinations will still apply to in vulnerable settings including:

- Hospitals
- Aged and disability care
- Prisons
- Schools and early childhood centres

The Premier said the settings have achieved their purpose: slowing the spread of COVID.

“More than 90 per cent of Queenslanders 12 and over have been fully vaccinated,” the Premier said.

“The Chief Health Officer advises we can now safely ease these settings and still maintain a high level of protection.”

Health Minister Yvette D'Ath said businesses and patrons are being given plenty of notice.

“These measures have done their job,” the Minister said.

“By April 14, it is anticipated we will be at a stage of the current wave where we are comfortable to take this next step.

“But the best defence against serious illness is to be fully vaccinated.

“Our focus is now very much on getting Queenslanders boosted and children vaccinated.”

Chief Health Officer Dr John Gerrard appealed particularly to parents of young children to consider getting vaccinated.

“Numbers of young Queensland children vaccinated are still not where they should be,” Dr Gerrard said.

“Their best protection is the vaccine and I would encourage every parent to consider it.”

Pop up vaccine hubs will open at around 50 sites including schools across the holidays, in addition to existing sites.

Queenslanders are reminded that masks can be worn when people feel it necessary to reduce risk.

Media contact: Martin Philip 0407 675 008

8. QSL Event Invitation – Pre-season Market Update – Posted – 6/4/22

6 April 2022

[View this email in your browser](#)



QSL Pre-season Market Update

Burdekin Growers are invited to join QSL Managing Director and CEO Greg Beashel and QSL Senior Manager, Treasury and Risk Matt Page for a market Update. Greg will also cover off on QSL product improvements.

The start of 2022 has seen much market volatility, with many external influences outside of the fundamental raw sugar supply and demand factors affecting the ICE 11.

Join our team to find out about:

- Factors driving the ICE 11 and currency
- The forward seasons pricing outlook
- Global sugar production forecasts for major sugar producers

Session details:

Please feel free to come along straight from the farm - this is an informal opportunity to meet with Greg and Matt.

Wednesday 20 April

10.30am - Burdekin PCYC, 164 MacMillan Street, Ayr

3.00pm - Canegrowers Hall, 68 Tenth Street, Home Hill

Tea/Coffee and cold drinks provided.

Burdekin



Grower Relationship Manager
Russell Campbell
0408 248 385
russell.campbell@qsl.com.au



Grower Relationship Officer
Kristen Paterson
0438 470 235
kristen.paterson@qsl.com.au



Grower Relationship Officer
Rebecca Love
0429 054 330
rebecca.love@qsl.com.au

Kalamia Cane Growers Organisation

Services

Offered to Members and Non-Members



KCGO in partnership with Portsmouth Petroleum (Puma) are proud to provide Bulk Fuel and Lubricant services to KCGO Members & Non-Members of the Burdekin Region. Call now to take advantage of our discounted pricing.

Credit Card payment options available to KCGO Members only

**KALAMIA CANE
GROWERS
ORGANISATION
LIMITED (KCGOL)
&
KALAGRO LIMITED**

Located at:

140 Young Street, AYR

Office Hours:

Monday – Friday
8.30am – 4.30pm

Postal Address:

PO Box 597, AYR QLD 4807

Phone:

07 47 83 13 12



Email:

admin@kalagro.com.au

Web:

www.kalagro.com.au

Facebook:

KalamiaCaneGrowersOrgLtd



KCGO PROVIDES PAYROLL SERVICES

Service offered to KCGO Members & Non-Members

- Wages Preparation – Fair Work ATO & STP Compliancy
- Superannuation
- End of Financial Year Processing
- WorkCover – Premiums & Claims Assistance



BAS agent
25954836

Payroll Manager
Jacki Kratzmann

KCGO PAYROLL SERVICE CHARGES

Members

\$12.20 (incl GST) per Payslip

Non-members

\$14.15 (incl GST) per Payslip

All Clients

\$20.25 (incl GST) End of Financial Year Processing (per Employee)

Harvest Invoice Services



PREPARATION OF WEEKLY HARVEST INVOICE CHARGES

Service offered to KCGO Members & Non-Members

Members:

\$12.20 (incl GST) per Invoice

Non-members:

\$14.15 (incl GST) per Invoice

Postage Charges:

\$1.10 per Env.

Delivery Options:

- Invoices emailed
- posted
- KCGO office pickup option