

In this Issue

****KCGO Member Discounted Health Insurance ****

1. Industry Update Meetings
2. QFF10 Things to Know
3. QSL Information Brief
4. Wilmar Production Report CrWk 11
Wilmar Bud vs Act CrWk 11
5. Wilmar Weekly Variety Summary CrWk11
6. Wilmar Business Update
7. Wilmar Burdekin Crushing Update
8. EEMuir & Sons - September Specials



FRIDAY, 2ND SEPTEMBER 2022

Kalagro Fuel Price

DIESEL - \$1.96115 incl GST

UNLEADED - \$1.5561 incl GST

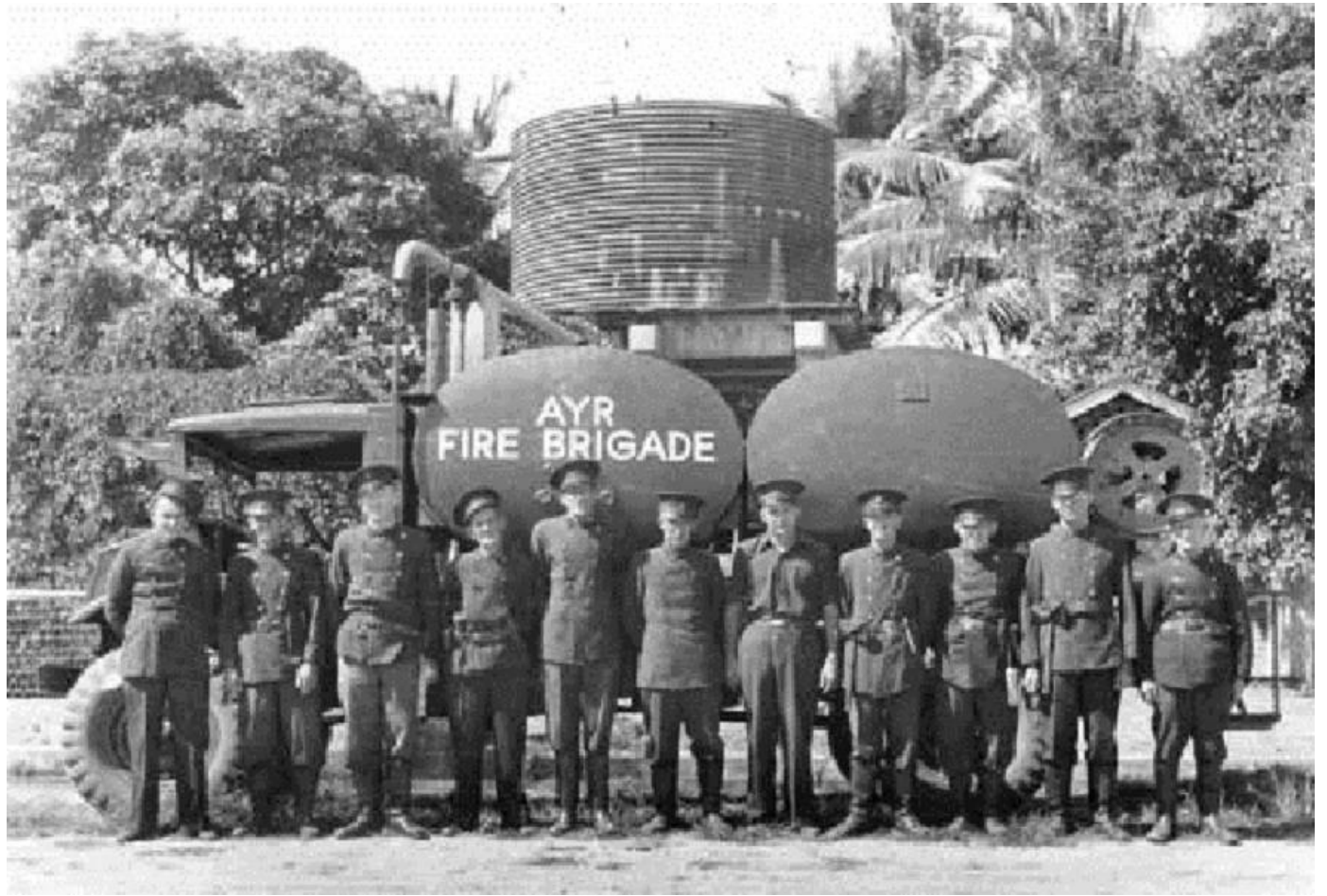
Fuel Delivery Days

Monday - Friday

UPCOMING EVENTS

- Industry Update Meetings starting Friday, 2nd September
(Table shown in Newsletter)





KCGO MEMBER DISCOUNTED HEALTH INSURANCE OFFER



Corporate Health Insurance

Working together with Kalamia Cane Growers, we are excited to offer you a healthy corporate discount on your health insurance under the Kalamia Cane Growers Corporate Health Plan. Experience the Queensland Country difference with:

- ✓ **Healthy savings**
A **6% discount*** on your annual policy premium.
- ✓ **A dedicated Corporate Partnership Manager**
Kim Anderson, your dedicated Corporate Partnership Manager will be happy to help you with any questions you may have.
- ✓ **Easy to understand products**
Our products are easy to understand and provide our Members with great value for money and peace of mind.
- ✓ **Excellent service**
We're here to help. Our commitment to helping our Members is second to none with fast and friendly service both face to face or over the phone.
- ✓ **National Coverage**
We provide coverage anywhere in Australia, giving you peace of mind wherever you work, live or play.
- ✓ **95% Member satisfaction rating***
- ✓ **Generous benefits**
Our benefits help promote a healthy lifestyle and based on direct Member feedback, are regularly reviewed to ensure they remain competitive.
- ✓ **Easy claiming**
Claim easily anywhere, anytime through our Mobile App by simply uploading a photo of your receipt or via our Online Member Services portal.

If you have any questions or for more information contact your dedicated Corporate Partnership Manager, Kim today!



**Queensland
Country
Health Fund**

0417 622 856 • kanderson@queenslandcountry.health

* The corporate discount is provided under the Kalamia Cane Growers Corporate Health Plan and is applied to the gross premiums at the chosen level of cover.
*Source: January 2021 Member Satisfaction Survey, 63% were very satisfied and 32% were somewhat satisfied from 1,494 respondents.

Already a Member with Queensland Country?



Great news if you're already a Member you'll now be eligible to receive a **corporate discount*** on your premium! To receive this discount simply complete the Apply Discount Form on your health insurance portal. Once you have submitted the request form, we will confirm via email or post that the discount has been applied.

ALSO, don't forget to **refer a friend, family member, colleague or work mate** to Queensland Country and if they take out an eligible singles policy during the promotional period you'll receive a \$100 Visa Gift Card*. And we'll double it for couples or family policies!

Make sure you tell your friend when joining to provide us with your name and contact details, so we can send you your gift card.

There is no gift card limit, so tell as many friends as you like!!



**Queensland
Country**
Health Fund

0417 622 856 • kanderson@queenslandcountry.health

1. Industry Update Meetings – Posted – 29/8/22

Industry Update Meetings

BPS, Farmacist and SRA will be presenting a series of industry updates. Given everyone is busy during this season, we have combined shed meeting groups and any grower is welcome to attend any of the meetings.

Fri 2 nd Sep 8:30am	Clare	Clare Club
Mon 5 th Sep 8:30am	Giru	Australian Cane Farms Shed
Tue 6 th Sep 8:30am	Kalamia	Neville Formalin Shed
Tue 6 th Sep 1pm	Pioneer	Brandon Tavern
Wed 7 th Sep 8:30am	Home Hill	Canegrowers Hall

Topics

- **Identifying and Managing Limiting Factors on Farm**
- **Local Harvester Trials**
- **Burdekin Legume Trial Data**
- **El Nino/La Nina Effects**
- **Standover Management**
- **Burdekin Herbicide Information**

Rob Milla

Manager

Burdekin Productivity Services

Email: rmilla@bps.net.au

Ph: 07 4783 1101

Mobile: 0490 036 329

PO Box 237 Ayr QLD 4807

210 Old Clare Road, Ayr

HERE'S 10 THINGS TO KNOW.

FROM  QUEENSLAND FARMERS' FEDERATION

1.

Jobs Queensland in collaboration with the Queensland Farmers' Federation have developed a suite of free workforce planning resources for SMEs in the Queensland Agriculture Industry. QFF and Jobs Queensland are inviting SME's to participate in an online webinar to learn more about these tools and how they can develop their workforce planning capacity. For more information and to book click [HERE](#)

2.

Applications are now open for the 2023 Science and Innovation Awards for Young People in Agriculture, Fisheries and Forestry! This competitive annual grants program supports young Australians aged 18-35 by funding projects that will benefit Australia's primary industries. In partnership with Australia's leading research and development corporations and industry associations, there are 12 industry categories each worth up to \$22,000 (GST inclusive). More Info [HERE](#)

3.

Trade and Investment Queensland's Go Global Export Program provides export ready SME's with financial support to achieve export outcomes in new international markets. Export ready farmers check it out [TIQ - Go Global Export Program](#)

4.

Leading representative body for the cane industry, [Canegrowers - Queensland Cane Growers Organisation](#) advocate for their members at a state, national and international level. Canegrowers is a founding member of the Global Sugar Alliance which works to strengthen trade and market negotiations. Learn more here [Trade - Canegrowers](#)

5.

QFF, Cotton Australia and AgForce Qld joined together last week to meet with Minister for Resources Hon Scott Stewart to advocate for the need for regulatory protection for agricultural land impacted by coal seam gas subsidence. Read more [HERE](#)

6.

Don't miss QFF's Farm Business Hour this Wednesday 31st August focusing on building capacity to manage weather risk during extremes. Register to attend here [QFF Farm Business Hour Episode 4: Managing weather risk during extremes](#)

7.

QFF CEO Jo Sheppard represented members and the Queensland Agricultural sector more broadly at Senator Murray Watt's [Ag Workforce roundtable](#) in the lead up to the National Jobs and Skills Summit to be held in Canberra this week. QFF are calling for a short-term immigration strategy, immediate housing solutions as well as long term initiatives to grow a strong workforce pipeline

as outlined in the [Qld Ag Industry Workforce Plan 2022-27](#).

8.

The Federal government has announced the creation of a biodiversity scheme that will recognize landholders who restore or manage local habitat granting them tradeable biodiversity certificates, operating in a similar way to current carbon crediting legislation. Read more [HERE](#).

9.

In the last three months alone, Telstra's systems have blocked just over 185 **million** malicious texts, but no tech can be 100% foolproof and you are still the best line of defence against scam texts. [Read more](#) on how to build your cyber security capability .

10.

How frustrating to see NFF's comments misconstrued by some during a time when we are all striving to work together to find solutions to the current workforce challenges. NFF's reflections noted that some employees working in the agriculture sector are provided free food and accommodation on top of their wages, not instead of. [Read NFF's recommendations to the Jobs and Skills Summit here](#)



[View this email in your browser](#)

3. QSL Information Brief – Posted – 30/8/22



- **Advance payments updated** QSL Advance payments were updated last week to reflect revised pool values as of 29 July 2022. Growers are reminded that where this adjustment has resulted in a negative value, this sum will be automatically carried forward and applied to your next scheduled QSL sugar payment. Any associated QSL RCAN, RCTI or Statement is not a request for payment. The next Advance rate increase – from 65% to 70% – remains provisionally scheduled for 19 October.

For more details regarding QSL's 2022-Season Advances program, please [click here](#).

- **Changes to Farm Arrangements** - Growers who have a QSL Grower Pricing Agreement (GPA) and who are planning changes to their farm's operating structure (such as a farm sale, new lease or subdivision) are asked to complete QSL's **Farm Transfer Information Form**.
This form gathers basic information about the transaction to enable QSL to prepare the relevant Deed of Acknowledgement and/or Deed of Novation required to implement associated pricing transfers. This can be done before, during or after the transaction, but ideally, before the transaction occurs.
For further information or to commence the process, please contact the QSL Direct team on 1800 870 756.

Key Dates

20 September – Any unpriced tonnage in the 2022 Target Price Contract will roll after this date and an adjustment will be applied

20 September – Last day to roll unpriced Oct22 Contract tonnage in the Individual Futures Contract and Self-Managed Harvest Contract. Any unpriced tonnage remaining after this date will be priced by QSL at the next market opportunity.

21 October – The QSL Annual General Meeting will be held from 10am at the Christie Spaces Conference Centre, 320 Adelaide Street, Brisbane.

If members have any questions in regards to the above, please don't hesitate to get in contact with:

- Russell Campbell - Grower Relationship Manager – 0408 248 385
- Kristen Paterson - Grower Relationship Officer– 0438 470 235
- Rebecca Love – Grower Relationship Officer – 0429 054 330 (Mon-Wed)

Rebecca Love

Grower Relationship Officer - Burdekin

Mobile 0429 054 330

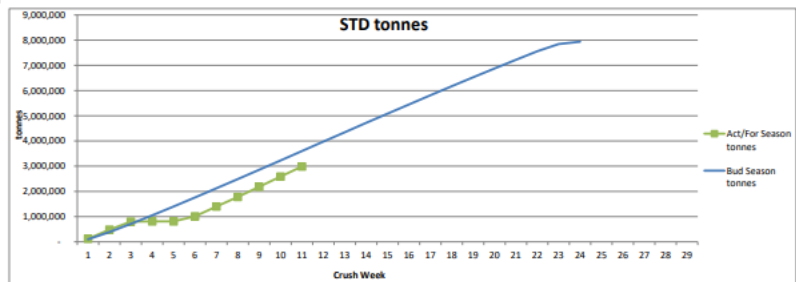
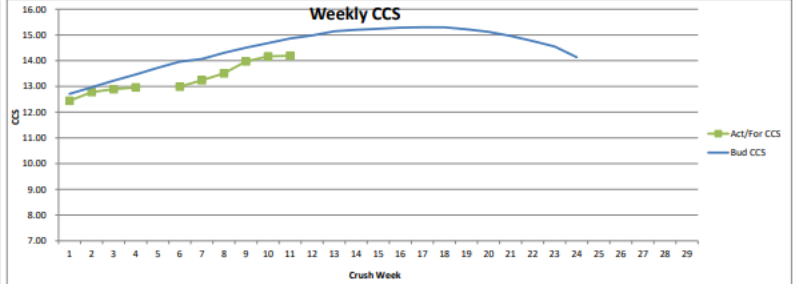
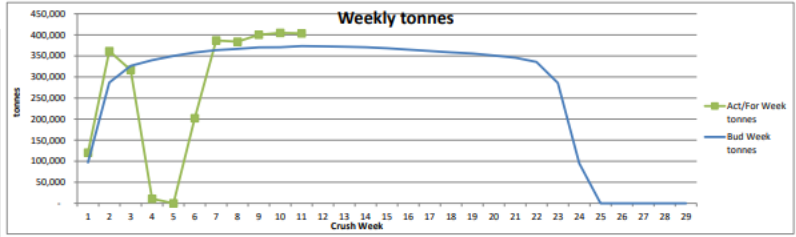
rebecca.love@qsl.com.au

www.qsl.com.au

4. Wilmar Budget vs Actual & Production Report – Crush Week 11 – Posted – 30/08/22

BURDEKIN MILLS - 2022 SEASON								Budget Bud CCS	Act/For CCS
Week Ending	BUDGET			ACTUAL / FORECAST					
	Rain Stops hrs	Bud Week tonnes	Bud Season tonnes	Rain Stops hrs	Act/For Week tonnes	Act/For Season tonnes			
18-Jun-22	24	96,987	96,987	0	120,184	120,184	12.71	12.44	
25-Jun-22	22	286,777	383,764	0	361,302	481,486	12.96	12.78	
02-Jul-22	20	326,517	710,281	16	316,661	796,147	13.22	12.89	
09-Jul-22	18	339,752	1,050,033	162	10,676	806,823	13.46	12.96	
16-Jul-22	16	350,019	1,400,052	168		806,823	13.72		
23-Jul-22	15	357,985	1,756,037	89	202,123	1,010,946	13.96	12.99	
30-Jul-22	14	363,846	2,121,883	0	386,625	1,397,571	14.06	13.24	
06-Aug-22	14	366,832	2,488,715	0	383,855	1,781,426	14.30	13.51	
13-Aug-22	13	370,202	2,858,917	0	400,110	2,181,536	14.50	13.97	
20-Aug-22	13	370,466	3,229,383	0	404,656	2,586,192	14.68	14.17	
27-Aug-22	12	373,381	3,602,764	0	403,396	2,989,588	14.86	14.19	
03-Sep-22	12	372,811	3,975,575	12	371,838	3,361,423	14.98	14.98	
10-Sep-22	12	371,832	4,347,407	12	370,436	3,731,869	15.14	15.14	
17-Sep-22	12	370,751	4,718,158	12	369,074	4,100,933	15.20	15.20	
24-Sep-22	12	368,358	5,086,516	12	366,842	4,467,476	15.24	15.24	
01-Oct-22	12	365,049	5,451,565	12	363,993	4,830,568	15.28	15.28	
08-Oct-22	12	361,575	5,813,140	12	359,619	5,190,187	15.30	15.30	
15-Oct-22	12	358,483	6,171,623	12	356,247	5,546,434	15.30	15.30	
22-Oct-22	12	355,763	6,527,386	12	352,646	5,898,980	15.22	15.22	
29-Oct-22	12	350,929	6,878,315	12	348,014	6,246,994	15.12	15.12	
05-Nov-22	12	345,696	7,224,011	14	340,617	6,587,611	14.96	14.96	
12-Nov-22	14	335,676	7,559,687	19	331,493	6,919,104	14.76	14.76	
19-Nov-22	14	285,622	7,845,309	27	303,680	7,222,784	14.55	14.55	
26-Nov-22	9	94,691	7,940,000	35	280,674	7,503,458	14.14	14.14	
03-Dec-22				43	267,772	7,761,230	13.82		
10-Dec-22				39	171,401	7,932,631	13.73		
17-Dec-22				45	144,763	8,077,394	13.50		
24-Dec-22				36	72,606	8,150,000	13.14		
31-Dec-22									
		338	7,940,000		735	8,150,000	14.58	13.27	

Comments:
A good crushing week with throughput again above budget. CCS is still below budget and struggling to get back to original expectations.
All mills except Pioneer exceeded the weekly budget. This was due to the maintenance stop on Tuesday being extended to repair a steam leak in #9 pan.



Weekly Production Figures

Burdekin region mills Week 11, ending 27 August 2022

Cane crushed	This week	Season to date
Invicta	167,580	1,321,266
Pioneer	73,786	508,554
Kalamia	75,717	540,610
Inkerman	86,314	619,160
Burdekin	403,397	2,989,590

CCS

Invicta	14.8	13.84
Pioneer	14.67	13.59
Kalamia	13.84	13.07
Inkerman	14.04	13.16
Burdekin	14.43	13.52

Weekly variety performance for region

Variety	%	CCS	Variety	%	CCS
Q240	44%	14.49	Q208	7%	14.47
KQ228	30%	14.17	Q232	6%	14.72
Q183	9%	15.10	WSRA17	3%	13.32

Comments:

The Burdekin mills processed more than 400,000 tonnes of cane for the third consecutive week.

This brings the season total to just under 3M tonnes, or approximately 37 per cent of the total forecast crop.

The average weekly CCS was 14.43 and continues to rise with the prolonged dry period.

The highest CCS sample was 17.8 from a rake of Q240-3R in the Stockham Rd productivity district.

Wilmar's Burdekin employees have been visiting schools in the district in conjunction with the North Queensland Cowboys Adopt A School program to talk to students about cane train safety.

John Tait
Cane Supply Manager
Burdekin Region



5. Wilmar Weekly Variety Summary – Crush Week 11 – Posted – 30/08/22

Mill : **KALAMIA** VARIETY SUMMARY Prepared: 04:12 PM Sun 28-Aug-2022
 dbp453: DI 09
 2022 season: Std wk 26 Week 10 ending 27-Aug-22 Report Name: FULL REPORT Page: 6

Variety Code Name	One Year Plant	Year Ratoon	tonnes Total	Standover Plant	tonnes Ratoon Total	ALL CANE Total	% CANE Supply	Avgc Bin Wt	1-Yr	CCS S/O	Total	Purity 1-Yr	S/O	Total	Cane EM	%	Mud Index
178 KQ228	20069	24214	44283			44283	58.3	6.66	13.93		13.93	87.3		87.4			5.1
200 Q240	14647	5110	19758			19758	26.0	6.47	13.87		13.87	87.8		87.8			3.5
190 Q232	2632	1414	4047			4047	5.3	6.51	12.95		12.95	87.6		87.6			3.0
163 Q208	1329	1153	2482			2482	3.0	6.19	12.71		12.71	85.2		85.3			3.0
218 WSR17	2331		2331			2331	3.0	5.77	11.36		11.36	83.8		83.9			3.0
26 Mixed	1803		1803			1803	2.3	6.91	13.55		13.55	86.3		86.3			1.8
143 Q183	1186	52	1239			1239	1.6	6.52	14.64		14.64	89.3		89.3			4.0
TOTAL	44000	31945	75946			75946	100.0	6.56	13.80		13.80	87.3		87.3			4.4

Mill : **INKERMAN** VARIETY SUMMARY Prepared: 03:11 PM Sun 28-Aug-2022
 dbp453: DI 09
 2022 season: Std wk 26 Week 11 ending 27-Aug-22 Report Name: FULL REPORT Page: 7

Variety Code Name	One Year Plant	Year Ratoon	tonnes Total	Standover Plant	tonnes Ratoon Total	ALL CANE Total	% CANE Supply	Avgc Bin Wt	1-Yr	CCS S/O	Total	Purity 1-Yr	S/O	Total	Cane EM	%	Mud Index
178 KQ228	24103	17050	41154			41154	47.6	6.80	14.18		14.18	87.4		87.5			4.4
200 Q240	15257	18272	33529			33529	38.8	6.60	14.09		14.09	87.7		87.8			3.5
163 Q208	2917	1464	4382			4382	5.0	6.08	13.41		13.41	85.8		85.9			4.2
143 Q183	2253	773	3027			3027	3.5	6.39	14.06		14.06	88.0		88.0			3.6
190 Q232	1455	1321	2777			2777	3.2	6.27	14.39		14.39	87.8		87.8			3.8
218 WSR17	1162	166	1328			1328	1.5	6.81	14.07		14.07	87.4		87.5			4.1
227 SRA23	115		115			115	0.1	6.82	12.90		12.90	87.2		87.3			4.5
TOTAL	47265	39048	86314			86314	100.0	6.65	14.11		14.11	87.5		87.5			4.0

Mill : **PIONEER** VARIETY SUMMARY Prepared: 02:48 PM Sun 28-Aug-2022
 dbp453: DI 09
 2022 season: Std wk 26 Week 10 ending 27-Aug-22 Report Name: FULL REPORT Page: 6

Variety Code Name	One Year Plant	Year Ratoon	tonnes Total	Standover Plant	tonnes Ratoon Total	ALL CANE Total	% CANE Supply	Avgc Bin Wt	1-Yr	CCS S/O	Total	Purity 1-Yr	S/O	Total	Cane EM	%	Mud Index
200 Q240	23124	15437	38561			38561	52.2	5.14	14.78		14.78	89.1		89.1			2.8
178 KQ228	5470	10323	15804			15804	21.4	6.26	14.36		14.36	87.8		87.9			3.0
143 Q183	5484	6517	12002			12002	16.2	5.13	15.09		15.09	89.9		89.9			4.4
190 Q232	2322	1753	4075			4075	5.5	5.06	14.55		14.55	88.0		88.0			3.2
163 Q208	1581	951	2532			2532	3.4	5.02	13.97		13.97	87.6		87.6			3.2
218 WSR17		322	322			322	0.4	4.74	13.71		13.71	87.6		87.7			2.2
193 Q247	251		251			251	0.3	5.25	11.56		11.56	84.0		84.0			2.5
6 Experime	235		235			235	0.3	4.20	13.94		13.94	86.6		86.6			1.6
TOTAL	38469	35315	73785			73785	100.0	5.15	14.68		14.68	88.6		88.7			3.1

Mill : **INVICTA** VARIETY SUMMARY Prepared: 04:39 PM Sun 28-Aug-2022
 dbp453: DI 09
 2022 season: Std wk 26 Week 11 ending 27-Aug-22 Report Name: LAB Page: 7

Variety Code Name	One Year Plant	Year Ratoon	tonnes Total	Standover Plant	tonnes Ratoon Total	ALL CANE Total	% CANE Supply	Avgc Bin Wt	1-Yr	CCS S/O	Total	Purity 1-Yr	S/O	Total	Cane EM	%	Mud Index
200 Q240	55169	31126	86295			86295	51.5	6.46	14.70		14.70	88.2		88.2			2.9
143 Q183	19726	7108	26835			26835	16.0	6.26	15.17		15.17	88.5		88.6			3.7
178 KQ228	9335	8765	18100			18100	10.8	6.28	14.68		14.68	87.9		87.9			3.8
163 Q208	8634	7479	16113			16113	9.6	6.17	14.99		14.99	88.2		88.2			3.5
190 Q232	9603	5237	14841			14841	8.8	5.85	15.23		15.23	88.4		88.4			3.4
218 WSR17	5259		5259			5259	3.1	5.90	14.12		14.12	88.0		88.0			3.4
26 Mixed	134	134	268			268	0.0	5.17	15.34		15.34	88.0		88.0			4.0
TOTAL	107728	59851	167579			167579	100.0	6.30	14.83		14.83	88.2		88.3			3.2



[View this email in your browser](#)

BUSINESS UPDATE



Tuesday, 30 August 2022

- **We're improving the signing process for grower agreements**
- **The agreements section of GrowerWeb will be unavailable from 3.30pm to 7.30pm tomorrow while these changes are made**

Wilmar Sugar is making some improvements to the signing process for grower agreements.

The key change will be the addition of active signing by a Wilmar representative, instead of the pre-populated Wilmar signature currently used.

Important things to note:

- There will be no changes to the GrowerWeb nominations process.
- GEI marketers will continue to be advised of nominations as soon as the grower has signed the CSA.
- Growers will initially see their signature only on the Cane Supply Agreement, Pooling and Pricing Agreement and Molasses Gain Sharing Deed.
- Within two business days, the agreements will be signed by a Wilmar representative and posted to GrowerWeb.

The agreements section of GrowerWeb will be unavailable from 3.30pm to 7.30pm tomorrow (Wednesday 31 August) while these changes are made.

The improved signing process will be effective from tomorrow night.

Please contact our Grower Relations and Strategic Initiatives Manager Steve Postma on 4722 1922 should you have any questions or concerns.

Best regards

PAUL GIORDANI

General Manager Cane Supply and Grower Relations



Copyright © 2022 Wilmar Sugar Australia, All rights reserved.

You are receiving this because you are a valued customer of Wilmar Sugar Australia.

Our mailing address is:

Wilmar Sugar Australia
Level 1, 5-21 Denham Street
Townsville, QLD 4810
Australia

[Add us to your address book](#)

[unsubscribe from this list](#) [update subscription preferences](#)



7. Wilmar Crushing Update – Posted – 31/8/22

WILMAR SUGAR CRUSHING UPDATE



Wednesday, 31 August 2022

A run of dry weather has enabled us to make good headway with the crush, with close to 40 per cent of the total crop processed.

We have now crushed **6.04 million tonnes of cane**, which represents **38 per cent** of the estimated **16.05 million tonne** crop.

We look forward to working closely with the growing and harvesting sectors to get the remaining crop off.

HERBERT

CCS this week	Tonnes to date	Per cent of total	Total HBT crop
12.0	1.85M	39 per cent	4.7 million tonnes

- The crop continues to cut above estimate; however CCS levels are tracking below budget due to in-season crop growth.
- Wet weather continues to interrupt harvesting and crushing operations. We have used the forced downtime to undertake maintenance and cleaning activities.
- Improved bin weights this season are helping to underpin good crush rates.

BURDEKIN

CCS this week	Tonnes to date	Per cent of total	Total BKN crop
14.50	3.15M	39 per cent	8.15 million tonnes

- Our Burdekin mills have achieved throughput totals of more than 400,000 tonnes for three consecutive weeks, as our production teams focus on maximising crush rates.

- We have passed the 3 million tonnes crushed milestone, and are nearing 40 per cent of the total crop crushed.
- Cane quality is improving in line with the dry field conditions. CCS is rising, although continues to track below forecast levels.

PROSERPINE

CCS this week	Tonnes to date	Per cent of total	Total PRO crop
14.41	515,800	30 per cent	1.7 million tonnes

- CCS continues to trend favourably, with the weekly average generally tracking above budget.
- Scattered showers over the past few days have created challenges for the harvesting and milling sectors.
- We are continuing to focus on improving factory reliability and daily loadings.

PLANE CREEK

CCS this week	Tonnes to date	Per cent of total	Total PCK crop
13.60	528,000	35 per cent	1.5 million tonnes

- Weather and ground conditions have been ideal for harvesting.
- The crop continues to cut above estimate. CCS levels are rising but are tracking one unit below budget.
- Factory reliability has been excellent. Crush rates have increased further following a successful evaporator clean last week.

IN THE COMMUNITY



The North Queensland Cowboys' Game Development team headed into our sugar milling regions in July and August to run junior rugby league clinics with local clubs.

The Wilmar-sponsored clinics were held in Ingham, Proserpine and the Burdekin, and featured current and former Cowboys players, including Mitch Dunn and Ray Thompson.

At the end of the hour-long sessions, Wilmar representatives had a quick chat about cane train safety, before handing out prize packs and jelly beans.

The JRL clinics have been a key part of Wilmar's community partnership with the North Queensland Cowboys for many years.

Best regards

PAUL GIORDANI

General Manager - Cane Supply and Grower Relations



Look out for those cane trains

wilmar

Copyright © 2022 Wilmar Sugar Australia, All rights reserved.

You are receiving this because you are a valued customer of Wilmar Sugar Australia.

Our mailing address is:

Wilmar Sugar Australia
Level 1, 5-21 Denham Street
Townsville, QLD 4810
Australia

[Add us to your address book](#)

[unsubscribe from this list](#) [update subscription preferences](#)



8. E.E Muir & Sons – September Specials for KCGO Members

September SPECIALS

Please see below September specials for KCGO Members.

To take advantage of these special prices, KCGO Members will have to complete a E.E. Muir credit application.

These are available for pick up here at the KCGO office or directly for E.E. Muir.

PLEASE NOTE: All transactions will be handled directly by the E.E. Muir



SEPTEMBER 2022 PROMOTION



PROMOTIONAL PRICE

\$250.00 + GST

RETAIL PRICE

\$325.00 + GST

KCGO & KALAGRO

Located at: 140 Young Street, AYR QLD 4807

Postal Address: PO Box 597, AYR QLD 4807

Phone: 07 47 83 13 12

Email: admin@kalagro.com.au

Web: www.kalagro.com.au

Facebook: KalamiaCaneGrowersOrgLtd

Office Hours: Monday – Friday - 8.30am – 4.30pm

SERVICES OFFERED TO MEMBERS AND NON-MEMBERS



KCGO in partnership with



are proud to provide

**BULK FUEL & LUBRICANT
services**

to **KCGO MEMBERS
& NON-MEMBERS**
of the Burdekin Region

CALL NOW

TO TAKE ADVANTAGE OF OUR DISCOUNTED PRICING

Ph: 47831312 E: admin@kalagro.com.au



*Credit Card Payment
Option available
to KCGO Members*



SERVICES

KCGO PROVIDES PAYROLL SERVICES

- Wages Preparation - Fair Work ATO & STP Compliancy
- Superannuation
- End of Financial Year Processing
- WorkCover - Premiums & Claims Assistance



BAS agent
25954836

Payroll Manager
Jacki Kratzmann

KCGO PAYROLL SERVICE CHARGES

Members:

\$12.20 (incl GST) per Payslip

Non-members:

\$14.15 (incl GST) per Payslip

All Clients:

\$20.25 (incl GST) End of Financial Year Processing (per Employee)

Harvest Invoice Services



PREPARATION OF WEEKLY HARVEST INVOICE CHARGES

Members:

\$12.20 (incl GST) per Invoice

Non-members:

\$14.15 (incl GST) per Invoice

Postage Charges:

\$1.10 per Env.

Delivery Options:

- Invoices emailed
- Posted
- KCGO office pickup option



KCGO MEMBER BENEFITS

All members can now take advantage of special monthly discounted prices on chemicals through E.E Muir & Sons.

Please call E.E Muir & Sons on Ph 47 90 27 00 for more information.

179-183 Drysdale St, BRANDON QLD 4808



E.E. Muir & Sons



ABOUT US

KCGO DIRECTORS

Robert Malaponte – **Chairman**

Denis Pozzebon – **Deputy Chairman**

Joseph Quagliata – **Director**

Frank Mugica – **Director**

KCGO Staff

Dave Paine – **Manager / Company Secretary**

Jacki Kratzmann – **Payroll Manager**

Annmaree D'Alessandro – **Administration Officer**

Narelle Breadsell – **Administration Officer**