



**KALAMIA CANE GROWERS
ORGANISATION LTD**

Weekly Web Round up

September Issue - #168

In this Issue

****KCGO Member Discounted Health Insurance****

1. SRA eNewsletter
2. QFF 10 Things to Know
3. Wlmar Budget vs Actual – Or Wk 12
Wlmar Production Report – Or Wk 12
4. Wlmar Weekly Variety Summary – Or Wk 12
5. Wlmar Inkerman Grower Update
6. Wlmar Advice – Cane Transfers



FRIDAY, 9TH SEPTEMBER 2022

Kalagro Fuel Price

DIESEL - \$1.89043 incl GST

UNLEADED - \$1.52440 incl GST

Fuel Delivery Days

Monday - Friday

UPCOMING EVENTS

N/A





KCGO MEMBER DISCOUNTED HEALTH INSURANCE OFFER



Corporate Health Insurance

Working together with Kalamia Cane Growers, we are excited to offer you a healthy corporate discount on your health insurance under the Kalamia Cane Growers Corporate Health Plan. Experience the Queensland Country difference with:

- ✓ **Healthy savings**
A **6% discount*** on your annual policy premium.
- ✓ **A dedicated Corporate Partnership Manager**
Kim Anderson, your dedicated Corporate Partnership Manager will be happy to help you with any questions you may have.
- ✓ **Easy to understand products**
Our products are easy to understand and provide our Members with great value for money and peace of mind.
- ✓ **Excellent service**
We're here to help. Our commitment to helping our Members is second to none with fast and friendly service both face to face or over the phone.
- ✓ **National Coverage**
We provide coverage anywhere in Australia, giving you peace of mind wherever you work, live or play.
- ✓ **95% Member satisfaction rating***
- ✓ **Generous benefits**
Our benefits help promote a healthy lifestyle and based on direct Member feedback, are regularly reviewed to ensure they remain competitive.
- ✓ **Easy claiming**
Claim easily anywhere, anytime through our Mobile App by simply uploading a photo of your receipt or via our Online Member Services portal.

If you have any questions or for more information contact your dedicated Corporate Partnership Manager, Kim today!



**Queensland
Country
Health Fund**

0417 622 856 • kanderson@queenslandcountry.health

* The corporate discount is provided under the Kalamia Cane Growers Corporate Health Plan and is applied to the gross premiums at the chosen level of cover.
*Source: January 2021 Member Satisfaction Survey, 63% were very satisfied and 32% were somewhat satisfied from 1,494 respondents.

Already a Member with Queensland Country?



Great news if you're already a Member you'll now be eligible to receive a **corporate discount*** on your premium! To receive this discount simply complete the Apply Discount Form on your health insurance portal. Once you have submitted the request form, we will confirm via email or post that the discount has been applied.

ALSO, don't forget to **refer a friend, family member, colleague or work mate** to Queensland Country and if they take out an eligible singles policy during the promotional period you'll receive a \$100 Visa Gift Card*. And we'll double it for couples or family policies!

Make sure you tell your friend when joining to provide us with your name and contact details, so we can send you your gift card.

There is no gift card limit, so tell as many friends as you like!!



**Queensland
Country**
Health Fund

0417 622 856 • kanderson@queenslandcountry.health

1. SRA eNewsletter – Posted – 2/9/22



Happy spring! Hope the weather is behaving in an expected spring-like manner where you are and not holding up the crush or planting. This September is a month of workshops, grants and awards opportunities. Check them out below.



Seedling Selection Day - Central

Variety Development Manager Central, Dr George Piperidis (pictured) will provide a hands-on lesson in sugarcane breeding and selection this Monday, 5 September from 10 am to 12 noon.

The event will take place during a Progeny Assessment Trial (PAT) which is being harvested at the SRA Te Kowai farm. Growers are invited to come and have their say on what makes a good variety in the Central region.

[More information and to rsvp](#)

SRA's AGM scheduled for 21 November

SRA's annual general meeting will be held on Monday 21 November 2022.

The meeting will be conducted in a hybrid format, with opportunity to attend either face-to-face at SRA's Indooroopilly office, or virtually through an online platform.

Members will receive the *Notice of 2022 Annual General Meeting* during October and will have the opportunity to vote on several resolutions, including the election of new directors and proposed changes to the SRA constitution.

More information about the resolutions will be shared through the Notice of AGM and through SRA's communications channels in the coming weeks.

[For more information on SRA membership](#)



Waterlogged soils workshops in the north

Join SRA staff and collaborators in Tully and Babinda, on Tuesday 6 September, for presentations and discussions on managing waterlogged soils, trials of enhanced efficiency fertilisers and opportunities for catchment intervention.

[Tully workshop 9am to 11am - read more](#)

[Babinda workshop 3pm to 5.30pm - read more](#)



Mackay forum focuses on the Bioeconomy

Mackay Sugar CEO Jannek Olejas will present a case study at the Bioeconomy Forum to be held in Mackay on Monday 12 September.

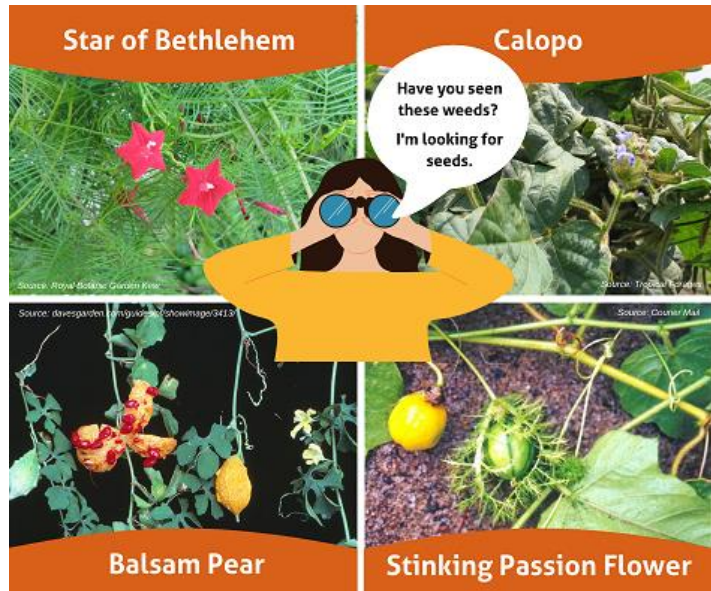
[Full program and to register](#)

On the hunt for seeds

SRA Weed Scientist Emilie Fillols is on the lookout for specific weed seeds for her chemical efficacy trials

Let us know if you have these weeds; Star of Bethlehem, Calopo, Balsam Pear and Stinking Passion Flower

[Contact your District Manager](#)



2023 ASSCT Conference dates announced in Cairns

The first conference of the Australian Society of Sugar Cane Technologists (ASSCT) was held in Cairns in 1930. Next year, the ASSCT returns to the far north Queensland tropical city after six years, for the 44th annual conference which will take place from 18 April 2023.

The submission deadline for outlines of papers, poster papers and extended abstracts is 25 October 2022.

[For more information on ASSCT](#)



All good - but could be better - in the Wet Tropics

The Wet Tropics Waterway Health Report Card for 2022 has given an overall grade of 'good' for the period July 2020 to June 2021.

The grade remains unchanged from the previous reporting period. The exception was the Barron estuary which improved its grade due to better water quality.

The Wet Tropics Report Card is part of a series of report cards reporting progress towards the Reef 2050 Long-term Sustainability Plan.

[Read the Wet Tropics Waterways Report Card 2022](#)



We're recruiting

Come and join our highly dedicated and passionate team and work on interesting and industry-critical activities. We're looking for:

- Industry Engagement and Events Manager - Flexible location
- Plant Breeding Technician - Mackay
- Manager Research Missions
- Pathology Senior Technician - Brisbane
- Business Support Officer - Mackay
- Casual Field Hands - Mackay

[All current vacancies here](#)

Tragic accidents

Two farming families in the Mackay/Plane Creek districts are in mourning after tragic on-farm accidents in the past month. Most recently, a father was killed, and his son seriously injured, in a tractor accident at a property south of Mackay. Earlier in August, a man working alone was crushed by his tractor on a property south of Koumala.

Our thoughts go out to the families and friends and colleagues.



Grants for young people, women, and water quality in Mackay/Whitsundays

Are you aged between 18-35? Do you have an original project that will contribute to the ongoing success and sustainability of the sugar industry? If you answered yes to both

questions then you could be eligible for up to \$22,000 to fund your project from the 2023 Science and Innovation Awards for Young People.

[Applications close 5pm AEST Friday 23 September - read more](#)

Scholarships are encouraging women in ag to step up. Scholarships of \$1000-\$5000 are available for women in agriculture to encourage them to increase their impact and step into leadership roles.

[Applications must be in by 9 September - read more](#)

The Mackay Whitsunday Water Quality Project Major Grants scheme aims to support farming practice change in the Pioneer and Plane Creek catchments to improve water quality in the Great Barrier Reef lagoon. Expressions of interest are now open.

[More information](#)

SRA Events

[SRA Seedling Selection Day - CENTRAL](#) SRA Te Kowai, 26135 Peak Downs Highway, Te Kowai, Monday 5 September, 10am

[Managing Waterlogged soils workshop - TULLY](#) Tully Mill Rec Hall, Writ Lane, Tully, Tuesday 6 September, 9am

[Managing Waterlogged soils workshop - BABINDA](#) Barry Stubbs' Shed, Ti Tree Rd, Mirriwinni, Tuesday 6 September, 3pm

Webinar of interest

[Workforce planning connect - tools for agriculture business webinar](#) - Jobs QLD in collaboration with the Queensland Farmers' Federation, 22 September 2022.

Copyright © 2022 Sugar Research Australia

Telephone: 07 3331 3333 | Email: sra@sugarresearch.com.au

Our address is 50 Meiers Road, Indooroopilly, QLD 4068, Australia

If you do not wish to receive future emails, [click here](#).

HERE'S 10 THINGS TO KNOW.

FROM  QUEENSLAND FARMERS' FEDERATION

1.

The Queensland Government's Drought and Climate Adaption Program (DCAP) has developed two new free web tools for horticulture producers. [HortCarbon Info](#) helps producers measure their carbon footprint. [Climate Monitor](#) allows producers and other agricultural business managers to refine and improve their business decisions. You can view these tools along with reports and case studies from the DCAP horticulture team on the [Long Paddock](#).

2.

The ACCC has updated its [Horticulture Code guidance](#) to help growers and traders understand their rights and fulfill their responsibilities under the code. The code seeks to protect horticulture growers by requiring all trading with agents and merchants (traders) to happen under a written agreement. The agreement must include certain things, such as how prices are calculated and when the grower gets paid. The Horticulture Code of Conduct can be found [here](#).

3.

The final consultation phase is underway on the draft AgriFutures Chicken Meat Program RD&E Plan 2022-2027, with industry consultation now open and feedback due by Tuesday, 20 September at 5pm AEST. This RD&E Plan is for the next five years and has been developed to address the issues and opportunities facing the industry, and deliver the overarching vision of the Chicken Meat Program to grow the long-term prosperity of the Australian chicken meat industry. More information [Here](#).

4.

Fair Farms is an industry-led initiative aimed at fostering fair and responsible employment practices in Australian horticulture. Go to [Growcom](#) to find out more and to register to attend the upcoming Fair Farms National Conference and Awards to be held 14th October in Coffs Harbour [Fair Farms Conference | Fair Farms](#)

5.

The **Jobs and Skills Summit** took place in Canberra last week to work on the challenges and opportunities facing the Australian workforce shortage and the impacts it is having on the broader economy. The Federal government has released a summary of the outcomes from the Summit, read more [here](#).

6.

QFF has partnered with the University of Queensland to understand the **impact of tariffs switching on agricultural operations** by working with farmers in Queensland and New South Wales in order to assist them in the decision-making process and support greater inclusion of farmers' needs in the design of more flexible tariffs. Read more [here](#).

7.

QFF has welcomed Qld Minister for Water Glenn Butcher's announcement of a **new three-year water release from the Dawson River** as good news for irrigators and economic development in the Dawson River catchment. This release follows on from the successful pilot of this project which commenced in 2019. Read more [here](#).

8.

QFF are pleased to announce **RCS Australia has joined QFF's Corporate Partnership program**. After three decades of operation, RCS Australia have developed a reputation as leaders in the delivery of education, professional development via a range of services and programs on how to best manage people, land, production systems and enterprise profitability to family businesses, corporate agriculture, indigenous agriculture and regional bodies. View a snippet about RCS Australia [here](#).

9.

The contribution of two individuals to the agriculture, fisheries or forestry sector will be recognized through the **2022 Queensland Agriculture Awards**, the Peter Kenny Medal and the Minister's Emerging Leader Award. If you know of an outstanding individual who should be recognized for their work in Ag, please nominate them [here](#), applications close 9th September 2022.

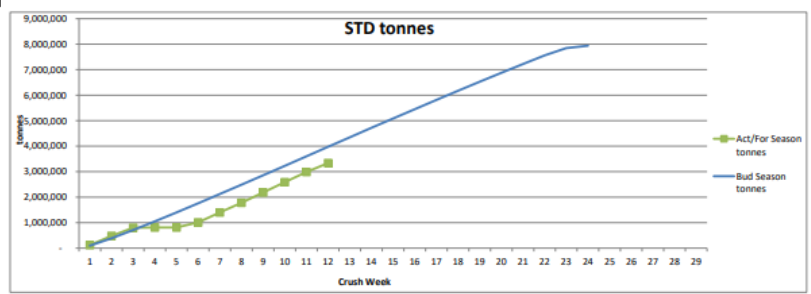
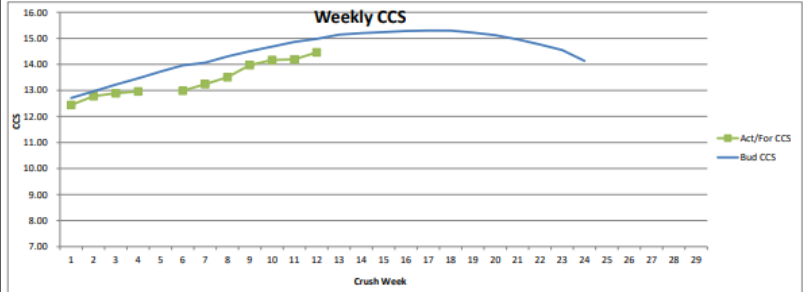
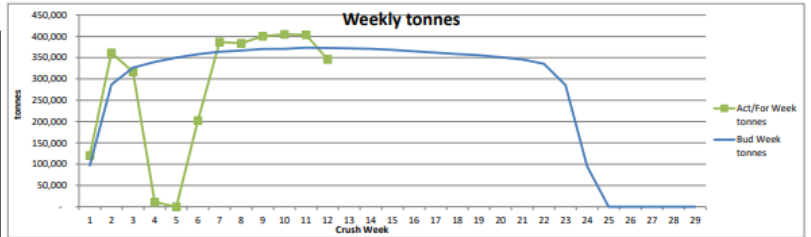
10.

QFF members eastAUSmilk support on farm innovation with dairy enterprises across the sector. Learn more about a 250-milking cow dairy in the Lockyer Valley region, who implemented a photovoltaic (PV) system and management opportunity based on the energy audit report the farm received through the QFF Energy Savers Plus Program Extension [here](#), and subscribe to eastAUSmilk newsletter to keep up with dairy news.

3. Wilmar Budget vs Actual & Production Report – Crush Week 12 – Posted – 05/09/22

BURDEKIN MILLS - 2022 SEASON										
Week Ending	BUDGET			ACTUAL / FORECAST			Budget Bud CCS	Act/For CCS		
	Rain Stops hrs	Bud Week tonnes	Bud Season tonnes	Rain Stops hrs	Act/For Week tonnes	Act/For Season tonnes				
18-Jun-22	24	96,987	96,987	0	120,184	120,184	12.71	12.44		
25-Jun-22	22	286,777	383,764	0	361,302	481,496	12.96	12.78		
02-Jul-22	20	326,517	710,281	16	316,661	798,147	13.22	12.89		
09-Jul-22	18	339,752	1,050,033	162	10,676	808,823	13.46	12.96		
16-Jul-22	16	350,019	1,400,052	168		808,823	13.72			
23-Jul-22	15	357,985	1,758,037	99	202,123	1,010,946	13.96	12.99		
30-Jul-22	14	363,846	2,121,883	0	386,625	1,397,671	14.06	13.24		
06-Aug-22	14	366,832	2,488,715	0	383,855	1,781,425	14.30	13.51		
13-Aug-22	13	370,202	2,858,917	0	400,110	2,181,536	14.50	13.97		
20-Aug-22	13	370,466	3,229,383	0	404,666	2,686,192	14.68	14.17		
27-Aug-22	12	373,381	3,602,764	0	403,396	2,989,588	14.86	14.19		
03-Sep-22	12	372,811	3,975,575	12	346,686	3,335,286	14.98	14.46		
10-Sep-22	12	371,832	4,347,407	12	370,436	3,705,722	15.14	15.14		
17-Sep-22	12	370,751	4,718,158	12	369,074	4,074,796	15.20	15.20		
24-Sep-22	12	368,358	5,086,516	12	366,642	4,441,338	15.24	15.24		
01-Oct-22	12	365,049	5,451,565	12	363,993	4,804,431	15.28	15.28		
08-Oct-22	12	361,575	5,813,140	12	369,619	5,164,090	15.30	15.30		
15-Oct-22	12	358,483	6,171,623	12	366,247	5,520,297	15.30	15.30		
22-Oct-22	12	355,763	6,527,386	12	362,646	5,872,843	15.22	15.22		
29-Oct-22	12	350,929	6,878,315	12	348,014	6,220,857	15.12	15.12		
05-Nov-22	12	345,696	7,224,011	14	340,617	6,561,474	14.96	14.96		
12-Nov-22	14	335,676	7,559,687	19	331,493	6,892,967	14.76	14.76		
19-Nov-22	14	285,622	7,845,309	27	303,680	7,196,647	14.55	14.55		
26-Nov-22	9	94,691	7,940,000	35	280,674	7,477,321	14.14	14.14		
03-Dec-22				43	267,772	7,735,093		13.82		
10-Dec-22				39	171,401	7,906,494		13.73		
17-Dec-22				45	144,763	8,051,257		13.50		
24-Dec-22				36	72,606	8,123,863		13.14		
31-Dec-22										
	338	7,940,000		735	8,123,863		14.58	13.25		

Comments:
 Throughput down this week due to extended clearing intermissions at Kalamia and Inkerman and also disrupted by light rain at the end of the week.
 CCS trended back towards budget once again.



Weekly Production Figures					
Burdekin region mills					
Week 12, ending 03 September 2022					
Cane crushed	This week	Season to date			
Invicta	134,851	1,456,116			
Pioneer	83,087	591,641			
Kalamia	57,532	598,191			
Inkerman	70,408	689,568			
Burdekin	345,698	3,335,516			
CCS					
Invicta	14.61	13.91			
Pioneer	14.52	13.72			
Kalamia	14.11	13.17			
Inkerman	13.92	13.25			
Burdekin	14.36	13.61			
Weekly variety performance for region					
Variety	%	CCS	Variety	%	CCS
Q240	52%	14.35	Q208	8%	14.36
KQ228	21%	14.21	Q183	8%	15.06
Q232	9%	14.69	WSRA17	1%	13.67
Comments:					
Throughput was down for the week due to extended clearing intermissions at Inkerman and Kalamia. There was also some disruption to supply on Saturday after scattered showers across the district impacted burning and harvesting.					
Pioneer Mill performed well, recording its highest weekly throughput for the season so far.					
Just over 40% of the forecast 8.15M tonne Burdekin crop has been crushed to date.					
The average weekly CCS was 14.46 and continues to rise.					
The highest CCS sample was 17.15 from a rake of Q240-P in the Barratta productivity district.					
Contractors working adjacent to our cane railway lines are reminded to notify the mill that they are working in the area.					
John Tait Cane Supply Manager Burdekin Region					



4. Wilmar Weekly Variety Summary – Crush Week 12 – Posted – 05/09/22

Mill : **KALAMIA** VARIETY SUMMARY Prepared: 11:59 AM Sun 04-Sep-2022
 dbp453: DI 09
 2022 season: Std wk 27 Week 11 ending 03-Sep-22 Report Name: FULL REPORT Page: 6

Variety Code Name	Plant	One Year Ratoon	Year -> Total	tonnes Standover	Plant Ratoon Total	Standover Total	ALL CANE Total Supply	% CANE	Avgc Bin Wt	1-Yr	CCS S/O	Total	Purity 1-Yr S/O	Total	Cane EM %	Mud Index
200 Q240	13230	7316	20547				20547	35.8	6.58	14.17		14.17	87.9	87.9		2.9
178 KQ228	7764	12617	20382				20382	35.5	6.54	14.15		14.15	87.5	87.5		4.3
190 Q232	1150	3632	4782				4782	8.3	5.98	14.39		14.39	87.8	87.8		3.8
143 Q183	2821	1775	4596				4596	8.0	6.42	14.40		14.40	89.2	88.3		1.9
163 Q208	3915	552	4467				4467	7.7	6.39	13.37		13.37	86.0	86.0		1.9
26 Mixed	1036		1036				1036	1.8	6.48	14.21		14.21	86.4	86.4		2.5
218 WSR17	497	285	783				783	1.3	6.22	13.36		13.36	86.9	86.9		2.3
90 No varie		309	309				309	0.5	6.18	14.10		14.10	88.0	88.0		1.2
27 SRA23	242		242				242	0.4	5.55	13.65		13.65	87.7	87.7		2.0
205 Q252		203	203				203	0.3	5.99	13.52		13.52	87.0	87.0		4.5
TOTAL	30659	26692	57351				57351	100.0	6.47	14.12		14.12	87.6	87.6		3.4

Mill : **INKERMAN** VARIETY SUMMARY Prepared: 01:17 PM Sun 04-Sep-2022
 dbp453: DI 09
 2022 season: Std wk 27 Week 12 ending 03-Sep-22 Report Name: FULL REPORT Page: 7

Variety Code Name	Plant	One Year Ratoon	Year -> Total	tonnes Standover	Plant Ratoon Total	Standover Total	ALL CANE Total Supply	% CANE	Avgc Bin Wt	1-Yr	CCS S/O	Total	Purity 1-Yr S/O	Total	Cane EM %	Mud Index
200 Q240	13380	19111	32491				32491	46.1	6.57	13.59		13.59	86.9	87.0		3.5
178 KQ228	8759	13976	22745	48	48		22794	32.3	6.87	14.41	10.18	14.40	87.8	79.0	87.9	4.5
163 Q208	3625	3582	7208				7208	10.2	6.33	14.17		14.17	87.0	87.1		4.0
143 Q183	1562	2929	4492	257	257		4749	6.7	6.42	13.72	12.07	13.63	86.7	82.3	86.5	4.0
190 Q232		1550	1550				1550	2.2	6.28	14.18		14.18	87.4	87.4		4.0
218 WSR17	1090	90	1180				1180	1.6	6.25	12.74		12.74	85.8	85.9		2.6
211 SRA9		305	305				305	0.4	6.94	13.75		13.75	87.1	87.2		3.0
227 SRA23	127		127				127	0.1	6.70	14.45		14.45	88.0	88.0		3.0
TOTAL	28555	41546	70102	305	305		70408	100.0	6.62	13.93	11.77	13.92	87.2	81.7	87.2	4.0

Mill : **PIONEER** VARIETY SUMMARY Prepared: 12:54 PM Sun 04-Sep-2022
 dbp453: DI 09
 2022 season: Std wk 27 Week 11 ending 03-Sep-22 Report Name: FULL REPORT Page: 6

Variety Code Name	Plant	One Year Ratoon	Year -> Total	tonnes Standover	Plant Ratoon Total	Standover Total	ALL CANE Total Supply	% CANE	Avgc Bin Wt	1-Yr	CCS S/O	Total	Purity 1-Yr S/O	Total	Cane EM %	Mud Index
200 Q240	37383	15213	52597				52597	63.3	5.19	14.48		14.48	88.5	88.6		2.8
178 KQ228	6193	6655	12848				12848	15.4	5.18	14.24		14.24	87.4	87.5		3.3
143 Q183		6633	6633				6633	7.9	4.85	15.23		15.23	89.2	89.2		4.0
163 Q208	5898	519	6418				6418	7.7	5.11	14.84		14.84	88.8	88.8		3.0
190 Q232	963	2285	3249				3249	3.9	4.96	14.55		14.55	88.1	88.2		3.0
204 Q253		932	932				932	1.1	5.27	14.10		14.10	85.9	85.9		7.9
6 Experime		407	407				407	0.4	4.91	14.38		14.38	88.0	88.0		2.9
TOTAL	50439	32647	83087				83087	100.0	5.14	14.53		14.53	88.4	88.4		3.1

Mill : **INVICTA** VARIETY SUMMARY Prepared: 03:26 PM Sun 04-Sep-2022
 dbp453: DI 09
 2022 season: Std wk 27 Week 12 ending 03-Sep-22 Report Name: LAB Page: 7

Variety Code Name	Plant	One Year Ratoon	Year -> Total	tonnes Standover	Plant Ratoon Total	Standover Total	ALL CANE Total Supply	% CANE	Avgc Bin Wt	1-Yr	CCS S/O	Total	Purity 1-Yr S/O	Total	Cane EM %	Mud Index
200 Q240	30481	44325	74807				74807	55.4	6.29	14.58		14.58	88.1	88.2		3.4
190 Q232	9830	9192	19022				19022	14.1	5.69	14.81		14.81	87.5	87.6		5.6
178 KQ228	7513	6856	14370				14370	10.6	6.53	14.11		14.11	87.0	87.1		4.4
143 Q183	5421	7126	12548				12548	9.3	6.32	15.30		15.30	88.5	88.6		4.9
163 Q208	4758	7510	12268				12268	9.1	5.91	14.53		14.53	87.2	87.3		4.0
218 WSR17	1274	291	1566				1566	1.1	6.34	13.43		13.43	86.6	86.7		2.8
26 Mixed		266	266				266	0.2	6.35	14.27		14.27	89.0	89.0		4.0
TOTAL	59280	75569	134850				134850	100.0	6.19	14.61		14.61	87.9	87.9		4.0



5. Wilmar Inkerman Grower Update – Posted- 6/9/22



Tuesday, 6 September 2022

We have identified the leaking convection bank tubes in Boiler 1 and are completing repairs.

- Crews are also carrying out precautionary measures on other tubes in the immediate area.
- We have utilised the unplanned stop to complete additional maintenance work in the factory.
- We currently expect to resume crushing around midnight tonight.
- Our logistics team will be in touch about tomorrow's loading.

Best regards

PAUL TURNBULL

Burdekin Regional Operations Manager



Wilmar Advice – Cane Transfers

Attention Members,

A general note to advise the HMG members that in addition to the 130 bins being transferred from Pioneer to Invicta, as from Monday 12th September, 60 bins a day will be transferred from Inkerman and 60 a day from Kalamia to Invicta as well. This is all subject to review depending on weather, mill performance, crop estimates, manning, equipment and logistics.

Kind regards,

John Tait

Cane Supply Manager



Wilmar Sugar Australia Limited

Burdekin Cane Supply and Transport

Sir Russell Drysdale Drive

Home Hill QLD 4806 Australia

Direct line +61 7 4782 3802

Fax +61 7 4782 1766

Mobile +61 0428 571 315

John.Tait@au.wilmar-intl.com

www.wilmar-international.com

September SPECIALS

Please see below September specials for KCGO Members.

To take advantage of these special prices, KCGO Members will have to complete a E.E. Muir credit application.

These are available for pick up here at the KCGO office or directly for E.E. Muir.

PLEASE NOTE: All transactions will be handled directly by the E.E. Muir



SEPTEMBER 2022 PROMOTION



PROMOTIONAL PRICE

\$250.00 + GST

RETAIL PRICE

\$325.00 + GST

KCGO & KALAGRO

Located at: 140 Young Street, AYR QLD 4807

Postal Address: PO Box 597, AYR QLD 4807

Phone: 07 47 83 13 12

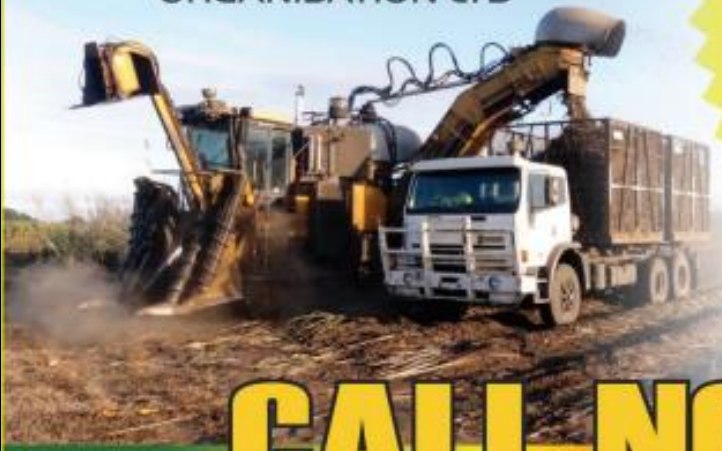
Email: admin@kalagro.com.au

Web: www.kalagro.com.au

Facebook: KalamiaCaneGrowersOrgLtd

Office Hours: Monday – Friday - 8.30am – 4.30pm

SERVICES OFFERED TO MEMBERS AND NON-MEMBERS



KCGO in partnership with



are proud to provide

**BULK FUEL & LUBRICANT
services**

to **KCGO MEMBERS
& NON-MEMBERS**
of the Burdekin Region

CALL NOW

TO TAKE ADVANTAGE OF OUR DISCOUNTED PRICING



*Credit Card Payment
Option available
to KCGO Members*



Ph: 47831312 E: admin@kalagro.com.au



SERVICES

KCGO PROVIDES PAYROLL SERVICES

- Wages Preparation - Fair Work ATO & STP Compliancy
- Superannuation
- End of Financial Year Processing
- WorkCover - Premiums & Claims Assistance



BAS agent
25954836

Payroll Manager
Jacki Kratzmann

KCGO PAYROLL SERVICE CHARGES

Members:

\$12.20 (incl GST) per Payslip

Non-members:

\$14.15 (incl GST) per Payslip

All Clients:

\$20.25 (incl GST) End of Financial Year Processing (per Employee)

Harvest Invoice Services



PREPARATION OF WEEKLY HARVEST INVOICE CHARGES

Members:

\$12.20 (incl GST) per Invoice

Non-members:

\$14.15 (incl GST) per Invoice

Postage Charges:

\$1.10 per Env.

Delivery Options:

- Invoices emailed
- Posted
- KCGO office pickup option

KCGO MEMBER BENEFITS

All members can now take advantage of special monthly discounted prices on chemicals through
E.E Muir & Sons.

Please call E.E Muir & Sons on Ph 47 90 27 00 for more information.

179-183 Drysdale St, BRANDON QLD 4808



E.E. Muir & Sons



ABOUT US

KCGO DIRECTORS

Robert Malaponte – **Chairman**

Denis Pozzebon – **Deputy Chairman**

Joseph Quagliata – **Director**

Frank Mugica – **Director**

KCGO Staff

Dave Paine – **Manager / Company Secretary**

Jacki Kratzmann – **Payroll Manager**

Annmaree D'Alessandro – **Administration Officer**

Narelle Breadsell – **Administration Officer**