



**KALAMIA CANE GROWERS
ORGANISATION LTD**

Weekly Web Round UP

September Issue - #170

In this Issue

****KCGO Member Discounted Health Insurance ****

1. QFF 10 Things to Know
2. Wilmar Budget vs Actual – Cr Wk 15
Production Report – Cr Wk 15
3. Wilmar Weekly Variety Summary – Cr Wk 15
4. Bowen Gumlu Growers Innovative Field Day
5. Pick Paradise & Harvest Trail Employment
Services Information



FRIDAY, 30TH SEPTEMBER 2022

Kalagro Fuel Price

DIESEL - \$2.00660 incl GST

UNLEADED - \$1.71455 incl GST

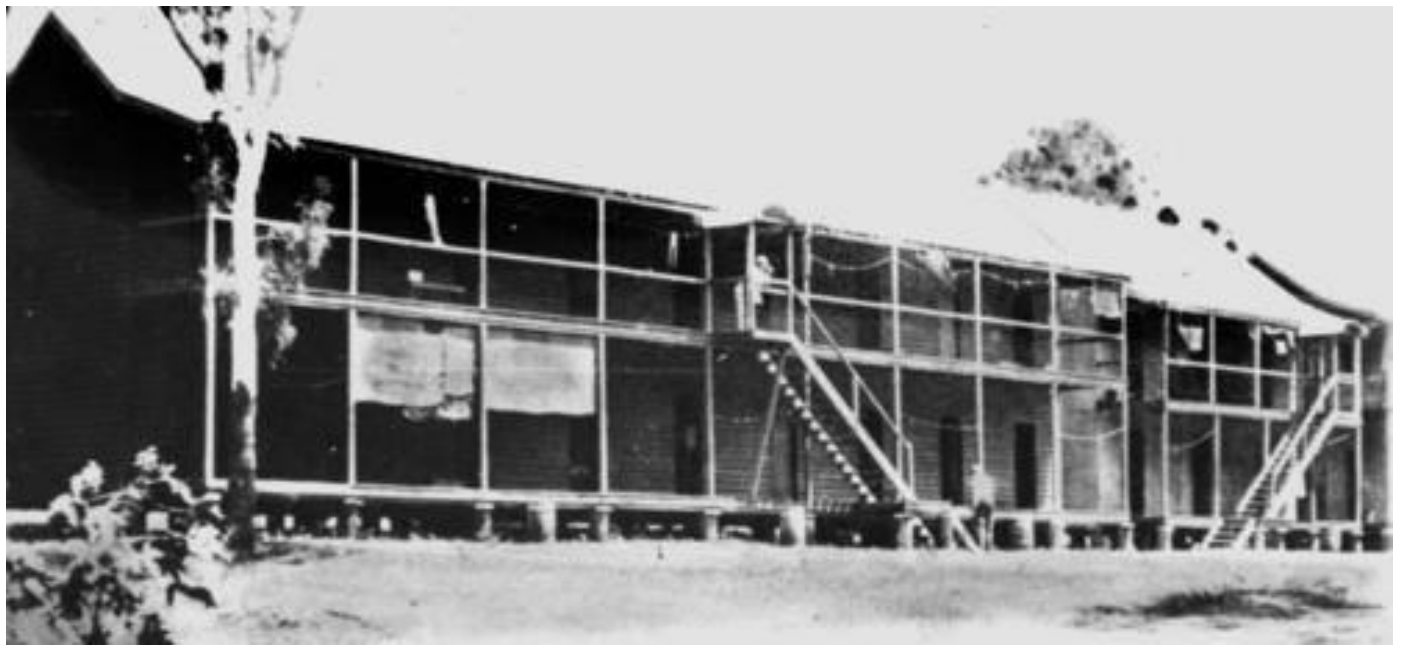
Fuel Delivery Days

Monday - Friday

UPCOMING EVENTS

**Bowen Gumlu Growers Field Day
4th November 2022 – Flyer below**





KCGO MEMBER DISCOUNTED HEALTH INSURANCE OFFER



Corporate Health Insurance

Working together with Kalamia Cane Growers, we are excited to offer you a healthy corporate discount on your health insurance under the Kalamia Cane Growers Corporate Health Plan. Experience the Queensland Country difference with:

- ✓ **Healthy savings**
A **6% discount*** on your annual policy premium.
- ✓ **A dedicated Corporate Partnership Manager**
Kim Anderson, your dedicated Corporate Partnership Manager will be happy to help you with any questions you may have.
- ✓ **Easy to understand products**
Our products are easy to understand and provide our Members with great value for money and peace of mind.
- ✓ **Excellent service**
We're here to help. Our commitment to helping our Members is second to none with fast and friendly service both face to face or over the phone.
- ✓ **National Coverage**
We provide coverage anywhere in Australia, giving you peace of mind wherever you work, live or play.
- ✓ **95% Member satisfaction rating[^]**
- ✓ **Generous benefits**
Our benefits help promote a healthy lifestyle and based on direct Member feedback, are regularly reviewed to ensure they remain competitive.
- ✓ **Easy claiming**
Claim easily anywhere, anytime through our Mobile App by simply uploading a photo of your receipt or via our Online Member Services portal.

If you have any questions or for more information contact your dedicated Corporate Partnership Manager, Kim today!



**Queensland
Country
Health Fund**

0417 622 856 • kanderson@queenslandcountry.health

* The corporate discount is provided under the Kalamia Cane Growers Corporate Health Plan and is applied to the gross premiums at the chosen level of cover.
[^]Source: January 2021 Member Satisfaction Survey, 63% were very satisfied and 32% were somewhat satisfied from 1,494 respondents.

Already a Member with Queensland Country?



Great news if you're already a Member you'll now be eligible to receive a **corporate discount*** on your premium! To receive this discount simply complete the Apply Discount Form on your health insurance portal. Once you have submitted the request form, we will confirm via email or post that the discount has been applied.

ALSO, don't forget to **refer a friend, family member, colleague or work mate** to Queensland Country and if they take out an eligible singles policy during the promotional period you'll receive a \$100 Visa Gift Card*. And we'll double it for couples or family policies!

Make sure you tell your friend when joining to provide us with your name and contact details, so we can send you your gift card.

There is no gift card limit, so tell as many friends as you like!!



**Queensland
Country**
Health Fund

0417 622 856 • kanderson@queenslandcountry.health

HERE'S 10 THINGS TO KNOW.

FROM  QUEENSLAND FARMERS' FEDERATION

1.

QFF is pleased to be hosting a breakfast event on Friday 18 November to mark National Agriculture Day 2022. Join the QFF network and learn more about Queensland agriculture's incredible journey of innovation, resilience, and sustainability with keynote speaker Terry McCosker OAM and a guest panel of industry leaders. Book your ticket [HERE](#).

2.

On farm biosecurity matters. A new online training resource 'Introduction to Farm Biosecurity for Chicken Growers' is now available, designed as an introduction or refresher to biosecurity on meat chicken farms. Register for the course [HERE](#).

3.

Drought remains a key risk for Queensland farmers to navigate and manage. Consultation is now open on the review of the Australian Government's Drought Plan. Submissions close on 5 October 2022. More information can be found [HERE](#).

4.

The Federal Court has found Lactalis breached the Dairy Code of Conduct by failing to meet some of its obligations in relation to the 2020-21 milk season. ACCC Deputy Chair Mick Keogh, says this is an important case for the ACCC as these are the first proceedings instituted under the Dairy Code of Conduct, and the decision is a win for dairy farmers who generally have limited bargaining power in their dealings with much larger processors. Read more [HERE](#).

5.

The Diversity in Agriculture Leadership Program is a flagship program of the National Farmers' Federation designed to increase the representation of women in the leadership ranks of Australian agriculture. To learn more and find out how you might be able to get involved, click [HERE](#).

6.

QFF is pleased to be supporting the Australian Farm Institute's *Cultivating ESG Capability* conference to be held on 18 October 2022 and looking forward to hearing from our members [Canegrowers](#) and [Cotton Australia](#) along with Senator [Murray Watt](#) on this evolving topic. Book your online or in-person ticket [HERE](#).

7.

[Energy Consumers Australia](#) has awarded QFF funding to launch a study identifying the emerging market for localised energy resources, like microgrids, community batteries, and virtual power plants, across Queensland's 3 Renewable Energy Zones. Farmers, local councils, and regional business are invited to participate in the study. Learn more and register your interest [HERE](#)

8.

Each year, the Independent Reviewer of the Food and Grocery Code of Conduct, Mr Chris Leptox AO, invites direct suppliers of Aldi, Coles, Metcash or Woolworths to provide feedback on their dealings with the grocery retailers. This is a valuable opportunity to provide feedback on a confidential basis, and the survey results will contribute to improving conduct across the industry. To get your link, contact the Treasury [HERE](#).

9.

There are 3 days to go for the first in a series of webinars looking ahead to the coming years and highlighting the most interesting and innovative practices and services available to Australian vegetable growers. Find out more, and register [HERE](#).

10.

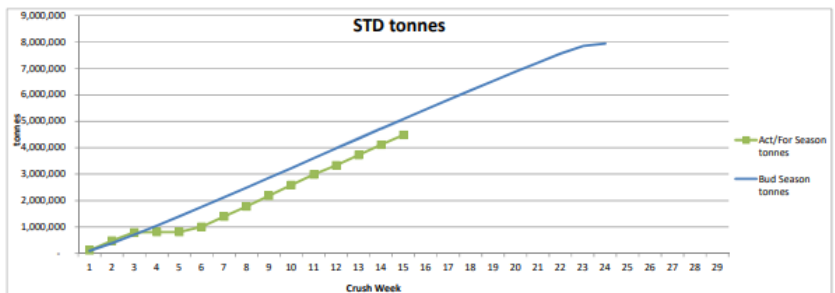
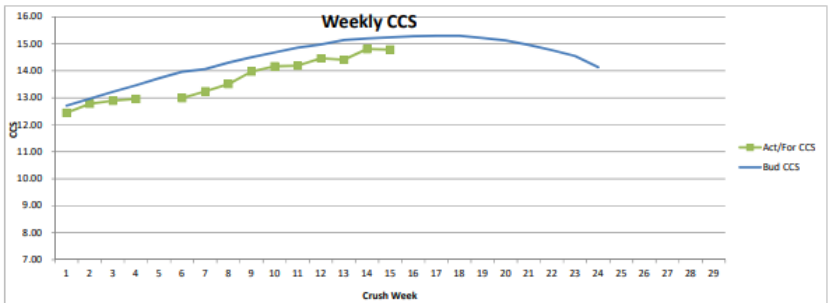
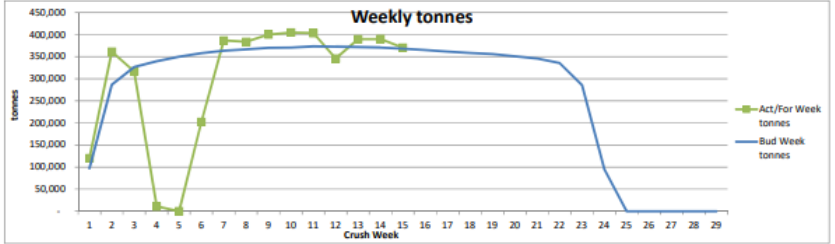
The Bush Edition of the SECNewgate monthly Mood of the Nation report says the cost of living, healthcare investment, strengthening the economy and providing affordable rental housing are the top tier issues for regional Australia. Read more [HERE](#).



[View this email in your browser](#)

2. Wilmar Budget vs Actual & Production Report – Crush Week 15 – Posted – 26/09/22

BURDEKIN MILLS - 2022 SEASON							Budget	Act/F'cast
Week Ending	Rain Stops hrs	BUDGET		ACTUAL / FORECAST				
		Bud Week tonnes	Bud Season tonnes	Rain Stops hrs	Act/For Week tonnes	Act/For Season tonnes	Bud CCS	Act/F'cast CCS
18-Jun-22	24	96,987	96,987	0	120,184	120,184	12.71	12.44
25-Jun-22	22	286,777	383,764	0	361,302	481,486	12.96	12.78
02-Jul-22	20	326,517	710,281	16	316,661	798,147	13.22	12.89
09-Jul-22	18	339,752	1,050,033	162	10,676	808,823	13.46	12.96
16-Jul-22	16	350,019	1,400,052	168		808,823	13.72	
23-Jul-22	15	357,985	1,758,037	59	202,123	1,010,946	13.96	12.99
30-Jul-22	14	363,846	2,121,883	0	396,625	1,397,671	14.06	13.24
06-Aug-22	14	366,832	2,488,715	0	383,855	1,781,426	14.30	13.51
13-Aug-22	13	370,202	2,858,917	0	400,110	2,181,636	14.50	13.97
20-Aug-22	13	370,466	3,229,383	0	404,656	2,586,192	14.68	14.17
27-Aug-22	12	373,381	3,602,764	0	403,625	2,989,817	14.86	14.19
03-Sep-22	12	372,811	3,975,575	0	346,791	3,335,608	14.98	14.46
10-Sep-22	12	371,832	4,347,407	0	389,721	3,725,329	15.14	14.41
17-Sep-22	12	370,751	4,718,158	0	389,889	4,115,218	15.20	14.81
24-Sep-22	12	368,358	5,086,516	0	370,434	4,485,652	15.24	14.79
01-Oct-22	12	365,049	5,451,565	12	363,093	4,848,745	15.28	16.28
08-Oct-22	12	361,575	5,813,140	12	359,619	5,208,364	15.30	16.30
15-Oct-22	12	358,483	6,171,623	12	356,247	5,564,611	15.30	16.30
22-Oct-22	12	355,763	6,527,386	12	352,546	5,917,157	15.22	16.22
29-Oct-22	12	350,929	6,878,315	12	348,014	6,265,171	15.12	16.12
05-Nov-22	12	345,696	7,224,011	14	340,617	6,605,788	14.96	14.96
12-Nov-22	14	335,676	7,559,687	19	331,493	6,937,281	14.76	14.76
19-Nov-22	14	285,622	7,845,309	27	303,680	7,240,961	14.55	14.55
26-Nov-22	9	94,691	7,940,000	35	280,674	7,521,635	14.14	14.14
03-Dec-22				43	257,772	7,779,407	13.82	
10-Dec-22				39	171,401	7,950,808	13.73	
17-Dec-22				45	144,763	8,095,571	13.60	
24-Dec-22				36	54,429	8,150,000	13.14	
31-Dec-22								
	338	7,940,000		687	8,150,000		14.58	13.21



Comments:
Throughput was just greater than budget this week overall with Invicta well down due to the stop for repairs to Boiler 3 economiser and Kalamia experiencing low rates and numerous stops with maceration pump and shredder issues.
Inkerman crushed to budget despite an extended stop for maintenance and clearing while Pioneer recorded the highest throughput for the year.
CCS dropped slightly and is still below weekly budget.

Weekly Production Figures					
Burdekin region mills					
Week 15, ending 24 September 2022					
Cane crushed	This week	Season to date			
Invicta	138,423	1,897,338			
Pioneer	86,479	840,683			
Kalamia	68,063	830,231			
Inkerman	77,468	917,308			
Burdekin	370,433	4,485,560			
CCS					
Invicta	15.02	14.15			
Pioneer	15.12	14.07			
Kalamia	14.24	13.46			
Inkerman	14.49	13.53			
Burdekin	14.79	13.88			
Weekly variety performance for region					
Variety	%	CCS	Variety	%	CCS
Q240	47%	14.95	Q208	10%	14.38
KQ228	19%	14.64	Q232	8%	14.52
Q183	12%	15.41	WSRA17	3%	14.29

Comments:
The Burdekin mills crushed more than 370,000 tonnes for the week.
While the throughput total was on budget, some factory issues prevented a stronger result. They included an unplanned stop at Invicta Mill for boiler repairs and an extended clean at Inkerman.
Pioneer Mill recorded its highest throughput of any week for the year.
Just under 4.5M tonnes, or 55% of the forecast 8.15M tonne Burdekin crop, has been crushed to date.
The average weekly CCS was 14.79, which was slightly down on the previous week.
The highest CCS sample of 17.4 was shared between a rake of Q240 2R in the Leichardt productivity area (Inkerman) and a rake of Q240-P in the Lower Clare productivity area (Invicta).
With school holidays now under way, parents and carers are urged to remind children of the dangers associated with cane trains. Children should keep well away from the cane rail network and never play on or around cane bins.

John Tait
Cane Supply Manager
Burdekin Region



3. Wilmar Weekly Variety Summary – Crush Week 15 – Posted – 26/09/22

Mill : **KALAMIA** VARIETY SUMMARY Prepared: 02:31 PM Sun 25-Sep-2022
 dbp453: DI 09
 2022 season: Std wk 30 Week 14 ending 24-Sep-22 Report Name: FULL REPORT Page: 6

Variety Code Name	Plant	One Year Ratoon	Total	tonnes	Standover	Total	ALL CANE	% Supply	Avg Bin Wt	1-Yr	CCS S/O	Total	1-Yr	Purity S/O	Total	Cane EM	%	Mud Index
178 KQ228	8244	19871	28115	28115	41.3	6.64	14.47	14.47	87.1	87.2	5.5							
200 Q240	10982	9853	20835	20835	30.6	6.54	14.13	14.13	86.8	86.9	3.2							
163 Q208	223	6462	6685	6685	9.8	5.99	14.52	14.52	86.1	86.2	4.5							
143 Q183	3659	1158	4817	4817	7.0	6.42	14.23	14.23	85.9	85.9	4.1							
218 WSR17	4269	392	4661	4661	6.8	6.16	13.81	13.81	86.3	86.3	2.5							
190 Q232	808	1582	2390	2390	3.5	6.36	14.87	14.87	88.2	88.2	1.6							
6 Experime	233	99	332	332	0.4	5.04	12.05	12.05	81.8	81.9	1.0							
227 SRA23	224		224	224	0.3	6.23	13.42	13.42	87.0	87.0	2.0							
TOTAL	28644	39418	68063	68063	100.0	6.47	14.30	14.30	86.8	86.8	4.3							

Mill : **INKERMAN** VARIETY SUMMARY Prepared: 02:57 PM Sun 25-Sep-2022
 dbp453: DI 09
 2022 season: Std wk 30 Week 15 ending 24-Sep-22 Report Name: FULL REPORT Page: 7

Variety Code Name	Plant	One Year Ratoon	Total	tonnes	Standover	Total	ALL CANE	% Supply	Avg Bin Wt	1-Yr	CCS S/O	Total	1-Yr	Purity S/O	Total	Cane EM	%	Mud Index
200 Q240	10257	26564	36822	36822	47.5	6.65	14.47	14.47	86.9	86.9	3.5							
178 KQ228	5087	22970	28057	28057	36.2	6.85	14.60	14.60	87.1	87.1	4.9							
190 Q232	1842	5125	6968	6968	8.9	6.51	14.68	14.68	86.6	86.7	4.0							
163 Q208	1198	2362	3560	3560	4.5	6.41	14.89	14.89	86.6	86.7	4.2							
218 WSR17	1313	257	1571	1571	2.0	6.44	14.30	14.30	86.7	86.7	3.5							
143 Q183	18	415	433	433	0.5	6.57	16.44	16.44	88.9	89.0	3.3							
227 SRA23	68		68	68	0.0	6.19	12.75	12.75	84.0	84.0	4.0							
TOTAL	19773	57694	77468	77468	100.0	6.70	14.56	14.56	86.9	87.0	4.1							

Mill : **PIONEER** VARIETY SUMMARY Prepared: 12:54 PM Sun 25-Sep-2022
 dbp453: DI 09
 2022 season: Std wk 30 Week 14 ending 24-Sep-22 Report Name: FULL REPORT Page: 6

Variety Code Name	Plant	One Year Ratoon	Total	tonnes	Standover	Total	ALL CANE	% Supply	Avg Bin Wt	1-Yr	CCS S/O	Total	1-Yr	Purity S/O	Total	Cane EM	%	Mud Index
200 Q240	18979	25213	44192	44192	51.1	5.20	15.13	15.13	88.6	88.6	2.7							
143 Q183	3657	9983	13641	13641	15.7	5.04	15.51	15.51	89.1	89.2	3.2							
178 KQ228	1825	9294	11119	11119	13.3	5.19	15.15	15.15	88.0	88.1	3.2							
190 Q232	3679	7401	11080	11080	12.8	4.64	14.77	14.77	87.0	87.1	3.3							
163 Q208	303	3475	3778	3778	4.3	4.94	15.65	15.65	88.3	88.4	3.0							
218 WSR17	1620	215	1836	1836	2.1	5.19	13.41	13.41	86.5	86.6	3.2							
6 Experime	430		430	430	0.5	5.13	14.00	14.00	84.8	84.9	2.3							
TOTAL	30496	55983	86479	86479	100.0	5.08	15.13	15.13	88.3	88.3	2.9							

Mill : **INVICTA** VARIETY SUMMARY Prepared: 04:04 PM Sun 25-Sep-2022
 dbp453: DI 09
 2022 season: Std wk 30 Week 15 ending 24-Sep-22 Report Name: LAB Page: 7

Variety Code Name	Plant	One Year Ratoon	Total	tonnes	Standover	Total	ALL CANE	% Supply	Avg Bin Wt	1-Yr	CCS S/O	Total	1-Yr	Purity S/O	Total	Cane EM	%	Mud Index
200 Q240	16382	58993	75376	75376	54.4	6.31	15.25	15.25	88.2	88.3	3.2							
190 Q232	1166	16468	17635	17635	12.7	5.61	14.99	14.99	87.4	87.4	3.3							
178 KQ228	3616	13084	16700	16700	12.0	6.49	14.45	14.45	87.0	87.1	4.4							
143 Q183	2414	10891	13306	13306	9.6	6.30	15.07	15.07	87.4	87.4	4.0							
163 Q208	6174	3980	10154	10154	7.3	6.06	14.76	14.76	86.6	86.6	3.1							
218 WSR17	5084	165	5249	5249	3.7	6.23	14.03	14.03	86.3	86.4	3.2							
TOTAL	34838	103584	138422	138422	100.0	6.21	15.02	15.02	87.7	87.8	3.5							



4. Bowen Gumlu Growers Innovation Field Day – Posted – 29/9/22



Introducing your local
**AGRICULTURE
WORKFORCE
DEVELOPMENT
OFFICER**

The Queensland Agriculture Workforce Network (QAWN) is an industry-led rural jobs and skills initiative of seven Agricultural Workforce Officers (AWO's) working in regions throughout the state to attract, retain and upskill local ag workforces. Colette is the AWO for the North Queensland Region, hosted by Bowen Gumlu Growers Association (BGGGA).



HELLO! I'M
**COLETTE
WILLIAMS**
”

P: 07 4785 2860 | M: 0427009929
E: workforce@bowengumlugrowers.com.au
Address: 45 Warwick Street Bowen QLD 4805



04.11.22

INNOVATION

Field Day

11am - 4pm
DAF Bowen, 45 Warwick Road

- Automated Robotic technology in Horticulture
- Tech solutions for remote locations
- Drone operations
- The latest in Fall Army Worm technology
- Presentations on current pest species
- iMap Pests - Sentinel technology
- Weather station talks...and much much more!

BGGGA is seeking EOI for exhibitors

Contact David Shorten:
e. rdo@bowengumlugrowers.com.au
t. 0419 429 808



5. Pick Paradise & Harvest Trail Employment Services – Posted – 29/9/22



- Check out www.pickparadise.com.au
- Post a job to Pick Paradise by scanning QR code
- Search Pick Paradise on Facebook and Instagram to follow
- Use #pickparadise when you post to social media

Queensland
Agriculture
Workforce
Network
North Queensland



Harvest Trail

AN AUSTRALIAN GOVERNMENT INITIATIVE

Quality Innovation Training and Employment



Q.I.T.E.
Creating opportunities
Delivering jobs



Freecall 1800 354 414

Meeting your needs this
Harvest Season
contact QITE today.

The dedicated staff at QITE offer a professional, responsive and friendly service focused on delivering solutions to your employment challenges when faced with the rush of the Harvest Season.

Email for more information:
harvesttrailservices@qite.com

Local and Visa Workers Available

- Free Service
- Shortlisting process taken care of
- Introduction into OH&S
- All VEVO checks completed
- Available for all farming positions

QITE Mareeba | QITE Atherton | QITE Innisfail | QITE Cairns | QITE Bowen
Outreach Services in Mossman, Tully, Ravenshoe, Dimbulah, Ayr and Lakeland

****Last Opportunity for this September Special****

September SPECIALS

Please see below September specials for KCGO Members.

To take advantage of these special prices, KCGO Members will have to complete a E.E. Muir credit application.

These are available for pick up here at the KCGO office or directly for E.E. Muir.

PLEASE NOTE: All transactions will be handled directly by the E.E. Muir



SEPTEMBER 2022 PROMOTION



PROMOTIONAL PRICE

\$250.00 + GST

RETAIL PRICE

\$325.00 + GST

KCGO & KALAGRO

Located at: 140 Young Street, AYR QLD 4807

Postal Address: PO Box 597, AYR QLD 4807

Phone: 07 47 83 13 12

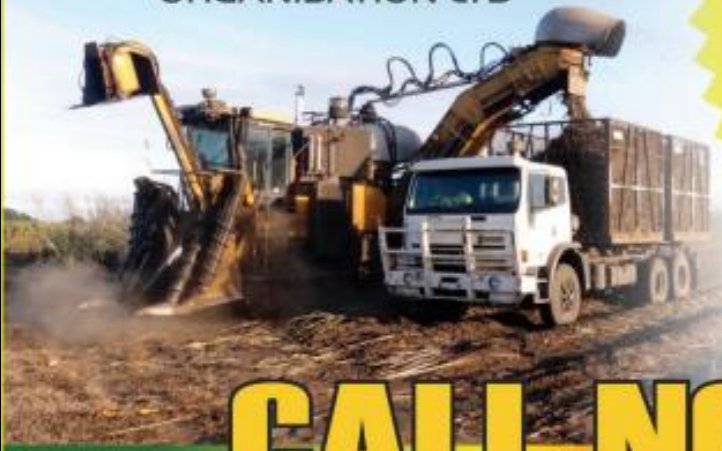
Email: admin@kalagro.com.au

Web: www.kalagro.com.au

Facebook: KalamiaCaneGrowersOrgLtd

Office Hours: Monday – Friday - 8.30am – 4.30pm

SERVICES OFFERED TO MEMBERS AND NON-MEMBERS



KCGO in partnership with



are proud to provide

**BULK FUEL & LUBRICANT
services**

to **KCGO MEMBERS
& NON-MEMBERS**
of the Burdekin Region

CALL NOW

TO TAKE ADVANTAGE OF OUR DISCOUNTED PRICING



*Credit Card Payment
Option available
to KCGO Members*



Ph: 47831312 E: admin@kalagro.com.au



SERVICES

KCGO PROVIDES PAYROLL SERVICES

- Wages Preparation - Fair Work ATO & STP Compliancy
- Superannuation
- End of Financial Year Processing
- WorkCover - Premiums & Claims Assistance



BAS agent
25954836

Payroll Manager
Jacki Kratzmann

KCGO PAYROLL SERVICE CHARGES

Members:

\$12.20 (incl GST) per Payslip

Non-members:

\$14.15 (incl GST) per Payslip

All Clients:

\$20.25 (incl GST) End of Financial Year Processing (per Employee)

Harvest Invoice Services



PREPARATION OF WEEKLY HARVEST INVOICE CHARGES

Members:

\$12.20 (incl GST) per Invoice

Non-members:

\$14.15 (incl GST) per Invoice

Postage Charges:

\$1.10 per Env.

Delivery Options:

- Invoices emailed
- Posted
- KCGO office pickup option

KCGO MEMBER BENEFITS

All members can now take advantage of special monthly discounted prices on chemicals through E.E Muir & Sons.

Please call E.E Muir & Sons on Ph 47 90 27 00 for more information.

179-183 Drysdale St, BRANDON QLD 4808



E.E. Muir & Sons



ABOUT US

KCGO DIRECTORS

Robert Malaponte – **Chairman**

Denis Pozzebon – **Deputy Chairman**

Joseph Quagliata – **Director**

Frank Mugica – **Director**

KCGO Staff

Dave Paine – **Manager / Company Secretary**

Jacki Kratzmann – **Payroll Manager**

Annmaree D'Alessandro – **Administration Officer**

Narelle Breadsell – **Administration Officer**