

# QSL Weekly Update

17 May 2024



## May Grower Pricing Update out now

Catch up on the latest raw sugar market and currency news, along with the current grower pricing fills for the 2024, 2025 and 2026 Seasons in this month's Grower Pricing Update.

[Click here to read the May Grower Pricing Update.](#)

## QSL Board meet and greet

Growers in the Southern Queensland region are invited to join the QSL Board and executive team for a meet and greet in June. Come along to hear a business update from General Manager Marketing Mark Hampson and General Manager Operations Adam Viertel, and catch up on all the latest market intel from Senior Manager of Marketing and Risk Matt Page. Event details are:

**WEDNESDAY 5 JUNE | MARYBOROUGH**

1:30pm, Canegrowers Maryborough, 106 Bazaar Street

### **THURSDAY 6 JUNE | CHILDERS**

10:00am, Canegrowers Childers, 48 Churchill Street

### **THURSDAY 6 June | BUNDABERG**

6:00pm, Burnett Riverside Hotel, 7 Quay Street

For catering purposes, RSVP to Glenn Harris on 0409 601 349.

## App training in Mackay

Mackay growers are invited to attend a small group training session to learn some handy tips and tricks on how the QSL App can help in-season with monitoring and managing your;

- Payments & payment forecasts
- Sugar deliveries
- Current sugar prices
- Pricing orders and nominations
- And many other key functions

Session details are:

### **WEDNESDAY 22 May | MT OSSA & MACKAY**

- 9.30am, Zarby's Cafe, 4440 Bruce Highway, Mount Ossa.
- 11.30am, QSL Office, 41 Gregory Street, Mackay
- 1:00pm, QSL Office, 41 Gregory Stret, Mackay

RSVP by contacting Brad Dunn (0418 978 120) or Karen Vloedmans (0429 804 876).

Can't make it and would like to know more? Get in touch with the local Mackay team to make an appointment.

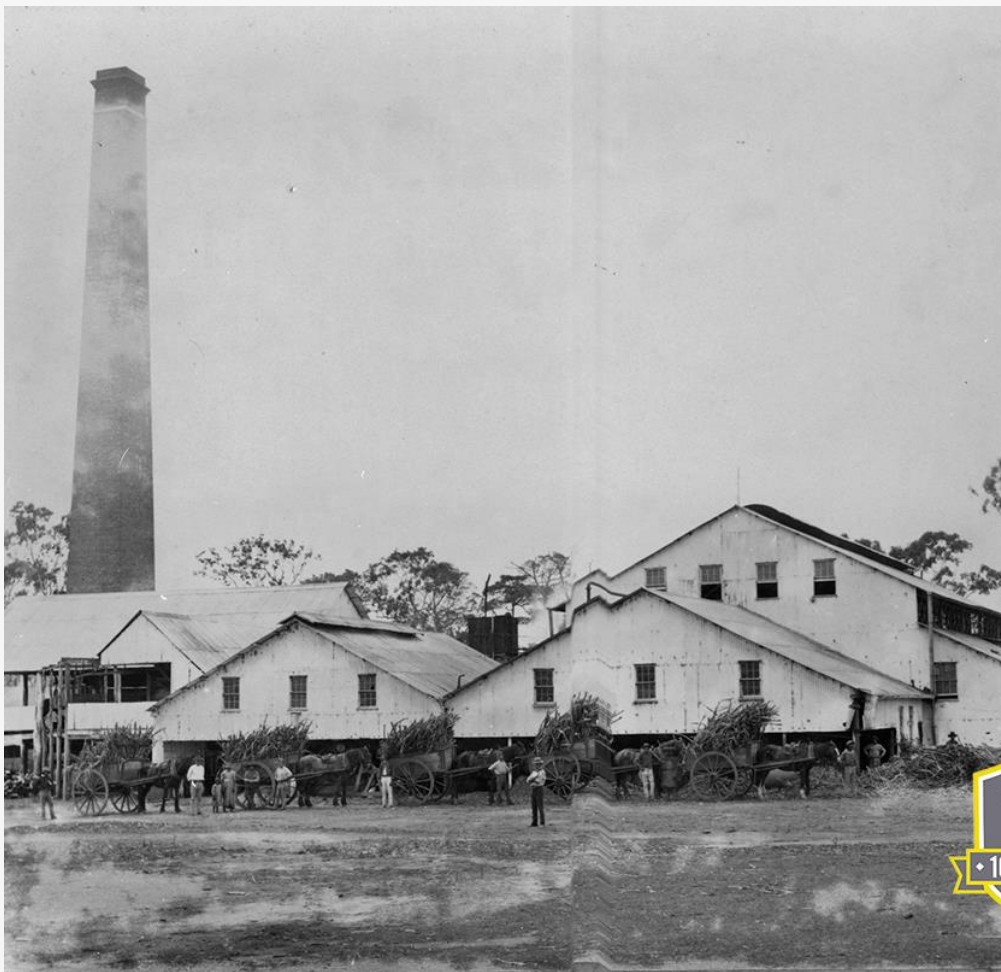
## QSL App | Converting cane to GEI Sugar

*Want to double-check your GEI Sugar estimate for future seasons?*

Head to the *Cane to GEI Sugar Converter* in the *Tools* section of the QSL App and simply enter your estimated cane tonnes and average CCS. You don't need to be a QSL Direct grower to access this feature – anyone with the QSL App on their device can use it.

[Click here to see how it's done.](#)

## Celebrating a century of service



Pictured: Palms Sugar Mill, near Mackay. Built by the Melbourne Mackay Queensland Sugar Company to service a number of small estates that

had been amalgamated, the Palms Mill commenced crushing in 1881 and operated until 1924. Photo courtesy of Mackay Regional Council Libraries.

## Advance rate increase

The 2023 QSL Standard Advance rate increased this week to 92.5%. The QSL Standard Advance rate default payment increased by \$19/tonne IPS net to \$765/tonne IPS net, based on an estimated combined QSL Harvest and US Quota pool value of \$827/tonne IPS net as of 26 April 2024.

[Click here to see the full 2023-Season Indicative Advance payment schedule.](#)

## Education | Who is UNICA?

*UNICA released its first report for the current harvest season last month, but who are they and why is this significant?*

Brazilian Sugarcane Industry and Bioenergy Association, also known as UNICA, represents the interests of the sugarcane sector in Brazil. Its regular reports on sugar and ethanol production are considered a key information source by market analysts.

## Key Dates 2024

### **20 June**

Any 2024-Season Target Price Contract tonnage not priced by this date

will automatically have its pricing window extended and roll costs may apply.

---

## 20 June

Any unpriced tonnage allocated to the July 2024 contract through the Individual Futures Contract and Self-Managed Harvest Contract that is not rolled by this date will be priced by QSL at the next market opportunity.

### QSL Pool Prices

Indicative pool prices and  
Shared Pool values

### Daily Sugar Prices

The latest market data

## Your QSL Grower Services Team

### Burdekin Region

**Erica Dickinson** 0461 495 951  
Grower Relationship Manager [Erica.Dickinson@qsl.com.au](mailto:Erica.Dickinson@qsl.com.au)

---

**Hugh Leeson-Smith** 0429 054 330  
Grower Services Graduate [Hugh.Leeson-Smith@qsl.com.au](mailto:Hugh.Leeson-Smith@qsl.com.au)

### Herbert River

**David Matsen** 0447 062 213  
Grower Relationship Manager [David.Matsen@qsl.com.au](mailto:David.Matsen@qsl.com.au)

---

**Michelle La Rosa-Aili** 0408 800 937  
Grower Relationship Officer [Michelle.LaRosa-Aili@qsl.com.au](mailto:Michelle.LaRosa-Aili@qsl.com.au)

### Southern Qld

**Glenn Harris** 0409 601 349  
Grower Relationship Officer [Glenn.Harris@qsl.com.au](mailto:Glenn.Harris@qsl.com.au)

## Central Region

**James Formosa** 0437 645 342  
Grower Relationship Manager [James.Formosa@qsl.com.au](mailto:James.Formosa@qsl.com.au)

**Karen Vloedmans** 0429 804 876  
Grower Relationship Officer [Karen.Vloedmans@qsl.com.au](mailto:Karen.Vloedmans@qsl.com.au)

**Brad Dunn** 0418 978 120  
Grower Relationship Officer [Brad.Dunn@qsl.com.au](mailto:Brad.Dunn@qsl.com.au)

## Far North Queensland

**Daniel Messina** 0429 660 238  
Grower Relationship Manager [Daniel.Messina@qsl.com.au](mailto:Daniel.Messina@qsl.com.au)

**Amanda Sheppard** 0418 264 393  
Grower Relationship Officer [Amanda.Sheppard@qsl.com.au](mailto:Amanda.Sheppard@qsl.com.au)

QSL Direct Helpline  
1800 870 756

**Take the sugar market  
into your own hands**

Download the QSL mobile app



Website



Facebook



LinkedIn

Level 12 / 348 Edward Street Brisbane Queensland 4000 Australia  
GPO Box 891 Brisbane Queensland 4001 Australia  
Phone: +61 7 3004 4400 - Email: [info@qsl.com.au](mailto:info@qsl.com.au)



We serve the interests of Growers and Millers for the long-term prosperity of the Queensland sugar industry.

This email contains information of a general or summary nature. While all care is taken in the preparation of this email, the reliability, accuracy or completeness is not guaranteed. The information contained within this email does not constitute financial or investment advice. You should seek independent advice before making any pricing decisions. QSL does not accept any responsibility to any person for any decisions or actions taken with respect to this email. You have received this email as you are subscribed to receive newsletters and other marketing material from QSL. We take your privacy very seriously. View our Privacy Statement on our website. When you make enquiries of QSL or sign up for QSL news or information, you thereby consent to QSL collecting and using the personal information that you provide to QSL in the operation of our business, which may include direct marketing. You may opt out of this service at any time if you no longer wish to receive any communications from us by using the unsubscribe function at the bottom of this email.

[UNSUBSCRIBE](#) | [WEB VERSION](#) | [MANAGE SUBSCRIPTION](#)